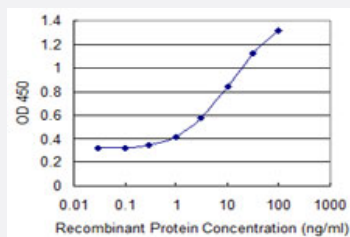


# WDR13 monoclonal antibody (M03), clone 1G9

Catalog # H00064743-M03

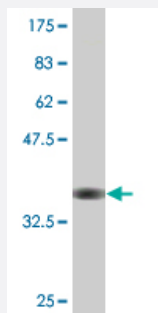
Size 100 ug

## Applications



### Sandwich ELISA (Recombinant protein)

Detection limit for recombinant GST tagged WDR13 is 0.1 ng/ml as a capture antibody.



Western Blot detection against Immunogen (36.08 KDa) .

## Specification

<b>Product Description</b>	Mouse monoclonal antibody raised against a partial recombinant WDR13.
<b>Immunogen</b>	WDR13 (NP_060353.2, 391 a.a. ~ 484 a.a) partial recombinant protein with GST tag. MW of the GST tag alone is 26 KDa.
<b>Sequence</b>	GTLQLKRSFPIEQSSHPVRSIFCPLMSFRQGACVVTGSEDMCVHFFDVERAAKAAVNKLQGHSA PVLDVSNFCDESLASSDASGMVWRREQ
<b>Host</b>	Mouse
<b>Reactivity</b>	Human

Interspecies Antigen Sequence	Mouse (99); Rat (98)
Isotype	IgG2a Kappa
Quality Control Testing	Antibody Reactive Against Recombinant Protein. Western Blot detection against Immunogen (36.08 KDa) .
Storage Buffer	In 1x PBS, pH 7.4
Storage Instruction	Store at -20°C or lower. Aliquot to avoid repeated freezing and thawing.

## Applications

- Western Blot (Recombinant protein)

[Protocol Download](#)

- Sandwich ELISA (Recombinant protein)

Detection limit for recombinant GST tagged WDR13 is 0.1 ng/ml as a capture antibody.

[Protocol Download](#)

- ELISA

## Gene Info — WDR13

Entrez GeneID	<a href="#">64743</a>
GeneBank Accession#	<a href="#">NM_017883</a>
Protein Accession#	<a href="#">NP_060353.2</a>
Gene Name	WDR13
Gene Alias	DKFZp779C2057, FLJ20563, MG21
Gene Description	WD repeat domain 13
Omim ID	<a href="#">300512</a>
Gene Ontology	<a href="#">Hyperlink</a>

**Gene Summary**

This gene encodes a member of the WD repeat protein family. WD repeats are minimally conserved regions of approximately 40 amino acids typically bracketed by gly-his and trp-aspartate (GH-WD), which may facilitate formation of heterotrimeric or multiprotein complexes. Members of this family are involved in a variety of cellular processes, including cell cycle progression, signal transduction, apoptosis, and gene regulation. This gene is widely expressed in various tissues, and located in chromosome X. The function of this gene has not been determined. [provided by RefSeq]

**Other Designations**

OTTHUMP00000025798|OTTHUMP00000025799|WD repeat domain 13 protein|located at OAT L1