

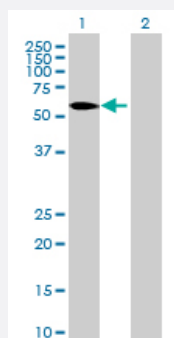
MaxPab®

WDR13 MaxPab mouse polyclonal antibody (B01P)

Catalog # H00064743-B01P

Size 50 ug

Applications



Western Blot (Transfected lysate)

Western Blot analysis of WDR13 expression in transfected 293T cell line ([H00064743-T01](#)) by WDR13 MaxPab polyclonal antibody.

Lane 1: WDR13 transfected lysate(53.35 KDa).

Lane 2: Non-transfected lysate.

Specification

Product Description

Mouse polyclonal antibody raised against a full-length human WDR13 protein.

Immunogen

WDR13 (NP_060353, 1 a.a. ~ 485 a.a) full-length human protein.

Sequence

MAAVWQQVLAVDARYNAYRTPTFPQFRTQYIRRRSQLLRENAKAGHPPALRRQYLRLRGQLLGQ
RYGPLSEPGSARAYSNSIVRSSRTTLDRMEDFEDDPRALGARGHRRSVSRGSYQLQAQMNRAVY
EDRPPGSVVPTSAAEASRAMAGDTSLSENYAFAGMYHVFDDQHVDEAVPRVRFANDDRHLAC
CSLDGSISLCQLVPAPPTVLRVLRGHTRGVSDFAWSLSNDILVSTSLDATMRWASEDGRCIREIP
DPDSAELLCTFQPVNNNLTVVGNKHNHVMNISTGKKVKGSSKLTGRVLALSFDAPGRLLW
AGDDRGSVFSFLDMATGKLTAKRLVVHEGSPVTSISARSWVSREARDPSLLINACLNKLLLYR
VVDNEGTLQLKRSFPIEQSSHVPVSIFCPLMSFRQGACVVTGSEDMCVHFFDVERAAKAAVNKL
QGHSAVLVDVSFNCDESLASSDASGMVIVWRREQK

Host

Mouse

Reactivity

Human

Interspecies Antigen Sequence

Mouse (99); Rat (98)

Quality Control Testing

Antibody reactive against mammalian transfected lysate.

Storage Buffer

In 1x PBS, pH 7.4

Storage Instruction

Store at -20°C or lower. Aliquot to avoid repeated freezing and thawing.

Applications

- Western Blot (Transfected lysate)

Western Blot analysis of WDR13 expression in transfected 293T cell line ([H00064743-T01](#)) by WDR13 MaxPab polyclonal antibody.

Lane 1: WDR13 transfected lysate(53.35 KDa).

Lane 2: Non-transfected lysate.

[Protocol Download](#)

Gene Info — WDR13

Entrez GeneID

[64743](#)

GeneBank Accession#

[NM_017883](#)

Protein Accession#

[NP_060353](#)

Gene Name

WDR13

Gene Alias

DKFZp779C2057, FLJ20563, MG21

Gene Description

WD repeat domain 13

Omim ID

[300512](#)

Gene Ontology

[Hyperlink](#)

Gene Summary

This gene encodes a member of the WD repeat protein family. WD repeats are minimally conserved regions of approximately 40 amino acids typically bracketed by gly-his and trp-aspartic acid (GH-WD), which may facilitate formation of heterotrimeric or multiprotein complexes. Members of this family are involved in a variety of cellular processes, including cell cycle progression, signal transduction, apoptosis, and gene regulation. This gene is widely expressed in various tissues, and located in chromosome X. The function of this gene has not been determined. [provided by RefSeq]

Other Designations

OTTHUMP00000025798|OTTHUMP00000025799|WD repeat domain 13 protein|located at OAT L1