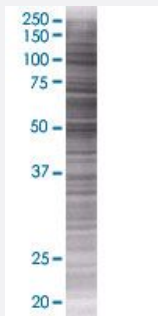


GORASP1 293T Cell Transient Overexpression Lysate(Denatured)

Catalog # H00064689-T01

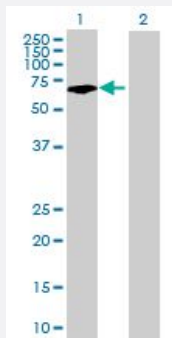
Size 100 uL

Applications



SDS-PAGE Gel

GORASP1 transfected lysate.



Western Blot

Lane 1: GORASP1 transfected lysate (46.5 KDa)

Lane 2: Non-transfected lysate.

Specification

Transfected Cell Line	293T
Plasmid	pCMV-GORASP1 full-length
Host	Human
Theoretical MW (kDa)	46.5
Interspecies Antigen Sequence	Mouse (82); Rat (81)

Quality Control Testing

Transient overexpression cell lysate was tested with Anti-GORASP1 antibody ([H00064689-B01](#)) by Western Blots.
SDS-PAGE Gel
GORASP1 transfected lysate.
Western Blot
Lane 1: GORASP1 transfected lysate (46.5 KDa)
Lane 2: Non-transfected lysate.

Storage Buffer

1X Sample Buffer (50 mM Tris-HCl, 2% SDS, 10% glycerol, 300 mM 2-mercaptoethanol, 0.01% Bromophenol blue)

Storage Instruction

Store at -80°C. Aliquot to avoid repeated freezing and thawing.

Applications

- Western Blot

Gene Info — GORASP1

Entrez GeneID

[64689](#)

GeneBank Accession#

[NM_031899](#)

Protein Accession#

[NP_114105](#)

Gene Name

GORASP1

Gene Alias

FLJ23443, GOLPH5, GRASP65, MGC118894, MGC118897, P65

Gene Description

golgi reassembly stacking protein 1, 65kDa

Omim ID

[606867](#)

Gene Ontology

[Hyperlink](#)

Gene Summary

The Golgi complex plays a key role in the sorting and modification of proteins exported from the endoplasmic reticulum. The protein encoded by this gene is a membrane protein involved in establishing the stacked structure of the Golgi apparatus. It is a caspase-3 substrate, and cleavage of this encoded protein contributes to Golgi fragmentation in apoptosis. This encoded protein can form a complex with the Golgi matrix protein GOLGA2, and this complex binds to the vesicle docking protein p115. Several alternatively spliced transcript variants of this gene have been identified, but their full-length natures have not been determined. [provided by RefSeq]

Other Designations

Golgi peripheral membrane protein p65|Golgi phosphoprotein 5|Golgi reassembly and stacking protein 1|Golgi reassembly and stacking protein, 65 kDa|Golgi reassembly stacking protein 1|OTTHUMP00000161966

Disease

- [Cardiovascular Diseases](#)
- [Diabetes Mellitus](#)
- [Edema](#)