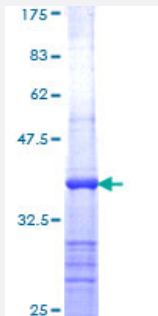


ANAPC1 (Human) Recombinant Protein (Q01)

Catalog # H00064682-Q01

Size 25 ug, 10 ug

Applications



Specification

Product Description	Human ANAPC1 partial ORF (NP_073153, 1841 a.a. - 1944 a.a.) recombinant protein with GST-tag at N-terminal.
Sequence	NSEFLPVVKCTIDNTLDQWLQVGGDMCVHAYLSGQPLEESQLSMLACFLVYHSVPAPQHLPPIGLEGSTSFAELLFKFKQLKMPVRALLRLAPLLGNPQPMVM
Host	Wheat Germ (in vitro)
Theoretical MW (kDa)	37.18
Interspecies Antigen Sequence	Mouse (86); Rat (87)
Preparation Method	in vitro wheat germ expression system
Purification	Glutathione Sepharose 4 Fast Flow
Quality Control Testing	12.5% SDS-PAGE Stained with Coomassie Blue.
Storage Buffer	50 mM Tris-HCl, 10 mM reduced Glutathione, pH=8.0 in the elution buffer.
Storage Instruction	Store at -80°C. Aliquot to avoid repeated freezing and thawing.
Note	Best use within three months from the date of receipt of this protein.

Applications

- Enzyme-linked Immunoabsorbent Assay
- Western Blot (Recombinant protein)
- Antibody Production
- Protein Array

Gene Info — ANAPC1

Entrez GeneID [64682](#)

GeneBank Accession# [NM_022662](#)

Protein Accession# [NP_073153](#)

Gene Name ANAPC1

Gene Alias APC1, MCPR, TSG24

Gene Description anaphase promoting complex subunit 1

Omim ID [608473](#)

Gene Ontology [Hyperlink](#)

Gene Summary ANAPC1 is 1 of at least 10 subunits of the anaphase-promoting complex (APC), which functions at the metaphase-to-anaphase transition of the cell cycle and is regulated by spindle checkpoint proteins. The APC is an E3 ubiquitin ligase that targets cell cycle regulatory proteins for degradation by the proteasome, thereby allowing progression through the cell cycle.[supplied by OMIM]

Other Designations anaphase-promoting complex 1 (meiotic checkpoint regulator)

Pathway

- [Cell cycle](#)
- [Ubiquitin mediated proteolysis](#)