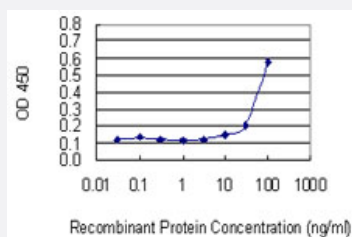


VPS16 monoclonal antibody (M05), clone 2F10

Catalog # H00064601-M05

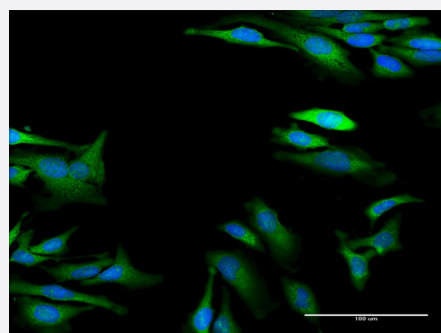
Size 100 ug

Applications



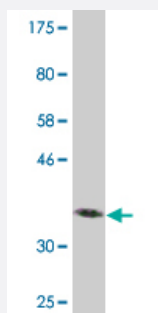
Sandwich ELISA (Recombinant protein)

Detection limit for recombinant GST tagged VPS16 is 3 ng/ml as a capture antibody.



Immunofluorescence

Immunofluorescence of monoclonal antibody to VPS16 on HeLa cell . [antibody concentration 40 ug/ml]



Western Blot detection against Immunogen (35.2 KDa) .

Specification

Product Description

Mouse monoclonal antibody raised against a partial recombinant VPS16.

Immunogen	VPS16 (NP_072097.2, 754 a.a. ~ 839 a.a) partial recombinant protein with GST tag. MW of the GST tag alone is 26 KDa.
Sequence	IGYLPFVEICMKQH NKYEAKKYASRVGPEQKVKALLLVGDVAQAADVAIEHRNEAELSLVLSHCTG ATDGATADKIQRARAAQAQKK
Host	Mouse
Reactivity	Human
Isotype	IgG2a Kappa
Quality Control Testing	Antibody Reactive Against Recombinant Protein. Western Blot detection against Immunogen (35.2 KDa) .
Storage Buffer	In 1x PBS, pH 7.4
Storage Instruction	Store at -20°C or lower. Aliquot to avoid repeated freezing and thawing.

Applications

- Western Blot (Recombinant protein)

[Protocol Download](#)

- Sandwich ELISA (Recombinant protein)

Detection limit for recombinant GST tagged VPS16 is 3 ng/ml as a capture antibody.

[Protocol Download](#)

- ELISA

- Immunofluorescence

Immunofluorescence of monoclonal antibody to VPS16 on HeLa cell . [antibody concentration 40 ug/ml]

Gene Info — VPS16

Entrez GeneID	64601
GeneBank Accession#	NM_022575
Protein Accession#	NP_072097.2
Gene Name	VPS16

Gene Alias	hVPS16
Gene Description	vacuolar protein sorting 16 homolog (S. cerevisiae)
Omim ID	608550
Gene Ontology	Hyperlink
Gene Summary	<p>Vesicle mediated protein sorting plays an important role in segregation of intracellular molecules into distinct organelles. Genetic studies in yeast have identified more than 40 vacuolar protein sorting (VPS) genes involved in vesicle transport to vacuoles. This gene encodes the human homolog of yeast class C Vps16 protein. The mammalian class C Vps proteins are predominantly associated with late endosomes/lysosomes, and like their yeast counterparts, may mediate vesicle trafficking steps in the endosome/lysosome pathway. Two transcript variants encoding different isoforms have been found for this gene. [provided by RefSeq]</p>
Other Designations	OTTHUMP00000030048 vacuolar protein sorting 16 vacuolar protein sorting protein 16