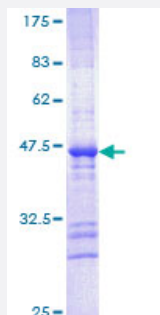


CDH22 (Human) Recombinant Protein (Q01)

Catalog # H00064405-Q01

Size 25 ug, 10 ug

Applications



Specification

Product Description	Human CDH22 partial ORF (NP_067071 , 274 a.a. - 383 a.a.) recombinant protein with GST-tag at N-terminal.
Sequence	PPRFPQKMYQFSIQESAPIGTAVGRVKAEDSDVGENTDMTYHLKDESSGGDVFKVTTDSDTQE AIVVQKRLDFESQPVHTVILEALNKFVDPRFADLGTFRDQAVRV
Host	Wheat Germ (in vitro)
Theoretical MW (kDa)	37.84
Interspecies Antigen Sequence	Mouse (93); Rat (93)
Preparation Method	in vitro wheat germ expression system
Purification	Glutathione Sepharose 4 Fast Flow
Quality Control Testing	12.5% SDS-PAGE Stained with Coomassie Blue.
Storage Buffer	50 mM Tris-HCl, 10 mM reduced Glutathione, pH=8.0 in the elution buffer.
Storage Instruction	Store at -80°C. Aliquot to avoid repeated freezing and thawing.
Note	Best use within three months from the date of receipt of this protein.

Applications

- Enzyme-linked Immunoabsorbent Assay
- Western Blot (Recombinant protein)
- Antibody Production
- Protein Array

Gene Info — CDH22

Entrez GeneID [64405](#)

GeneBank Accession# [NM_021248](#)

Protein Accession# [NP_067071](#)

Gene Name CDH22

Gene Alias C20orf25, MGC39564, dJ998H6.1

Gene Description cadherin-like 22

Omim ID [609920](#)

Gene Ontology [Hyperlink](#)

Gene Summary This gene is a member of the cadherin superfamily. The gene product is composed of five cadherin repeat domains and a cytoplasmic tail similar to the highly conserved cytoplasmic region of classical cadherins. Expressed predominantly in the brain, this putative calcium-dependent cell adhesion protein may play an important role in morphogenesis and tissue formation in neural and non-neural cells during development and maintenance of the brain and neuroendocrine organs. [provided by RefSeq]

Other Designations OTTHUMP00000031774|cadherin 22|ortholog of rat PB-cadherin

Disease

- [Diabetes Mellitus](#)
- [Diabetic Nephropathies](#)
- [Genetic Predisposition to Disease](#)

- [Kidney Failure](#)