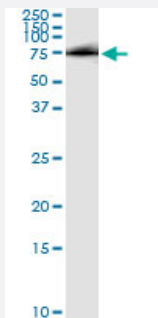


HHIP (Human) IP-WB Antibody Pair

Catalog # H00064399-PW1

Size 1 Set

Applications



Immunoprecipitation of HHIP transfected lysate using mouse monoclonal anti-HHIP and Protein A Magnetic Bead ([U0007](#)), and immunoblotted with rabbit polyclonal anti-HHIP.

Specification

Product Description	This IP-WB antibody pair set comes with one antibody for immunoprecipitation and another to detect the precipitated protein in western blot.
Reactivity	Human
Interspecies Antigen Sequence	Mouse (94); Rat (94)
Quality Control Testing	Immunoprecipitation-Western Blot (IP-WB) Immunoprecipitation of HHIP transfected lysate using mouse monoclonal anti-HHIP and Protein A Magnetic Bead (U0007), and immunoblotted with rabbit polyclonal anti-HHIP.
Supplied Product	Antibody pair set content: 1. Antibody pair for IP: mouse monoclonal anti-HHIP (300 ug) 2. Antibody pair for WB: rabbit polyclonal anti-HHIP (50 ul)
Storage Instruction	Store reagents of the antibody pair set at -20°C or lower. Please aliquot to avoid repeated freeze thaw cycle. Reagents should be returned to -20°C storage immediately after use.

Applications

- Immunoprecipitation-Western Blot

[Protocol Download](#)

Gene Info — HHIP

Entrez GeneID [64399](#)

Gene Name HHIP

Gene Alias FLJ20992, FLJ90230, HIP, STQTL12

Gene Description hedgehog interacting protein

Omim ID [606178](#)

Gene Ontology [Hyperlink](#)

Gene Summary This gene encodes a protein similar to the mouse hedgehog-interacting protein, a regulatory component of the hedgehog signalling pathway. Members of the hedgehog family are evolutionarily conserved proteins which are involved in many fundamental processes in embryonic development, including anteroposterior patterns of limbs and regulation of left-right asymmetry. [provided by RefSeq]

Other Designations hedgehog-interacting protein

Pathway

- [Basal cell carcinoma](#)
- [Hedgehog signaling pathway](#)
- [Pathways in cancer](#)

Disease

- [Crohn Disease](#)
- [Diabetes Mellitus](#)
- [Genetic Predisposition to Disease](#)
- [Growth Disorders](#)

- [Lung Diseases](#)
- [Pulmonary Disease](#)
- [Tobacco Use Disorder](#)