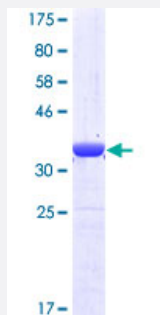


MPP5 (Human) Recombinant Protein (Q01)

Catalog # H00064398-Q01

Size 25 ug, 10 ug

Applications



Specification

Product Description	Human MPP5 partial ORF (NP_071919, 79 a.a. - 177 a.a.) recombinant protein with GST-tag at N-terminal.
Sequence	LDLNSSMRLKKLAQIPPKTGIDNPMFDTEEGVLESPHYAVKILEIEDLFSSLKHIQHTLVDSQSQEDI SLLLQLVQNKDFQNAFKIHNAITVHMNKAS
Host	Wheat Germ (in vitro)
Theoretical MW (kDa)	36.63
Interspecies Antigen Sequence	Mouse (96); Rat (96)
Preparation Method	in vitro wheat germ expression system
Purification	Glutathione Sepharose 4 Fast Flow
Quality Control Testing	12.5% SDS-PAGE Stained with Coomassie Blue.
Storage Buffer	50 mM Tris-HCl, 10 mM reduced Glutathione, pH=8.0 in the elution buffer.
Storage Instruction	Store at -80°C. Aliquot to avoid repeated freezing and thawing.
Note	Best use within three months from the date of receipt of this protein.

Applications

- Enzyme-linked Immunoabsorbent Assay
- Western Blot (Recombinant protein)
- Antibody Production
- Protein Array

Gene Info — MPP5

Entrez GeneID [64398](#)

GeneBank Accession# [NM_022474](#)

Protein Accession# [NP_071919](#)

Gene Name MPP5

Gene Alias FLJ12615, PALS1

Gene Description membrane protein, palmitoylated 5 (MAGUK p55 subfamily member 5)

Omim ID [606958](#)

Gene Ontology [Hyperlink](#)

Gene Summary Members of the peripheral membrane-associated guanylate kinase (MAGUK) family function in tumor suppression and receptor clustering by forming multiprotein complexes containing distinct sets of transmembrane, cytoskeletal, and cytoplasmic signaling proteins. All MAGUKs contain a PDZ-SH3-GUK core and are divided into 4 subfamilies, DLG-like (see DLG1; MIM 601014), ZO1-like (see TJP1; MIM 601009), p55-like (see MPP1; MIM 305360), and LIN2-like (see CASK; MIM 300172), based on their size and the presence of additional domains (Tseng et al., 2001 [PubMed 11311936]). MPP5 is a member of the p55-like MAGUK subfamily.[supplied by OMIM]

Other Designations MAGUK p55 subfamily member 5|membrane protein, palmitoylated 5|stardust

Pathway

- [Tight junction](#)