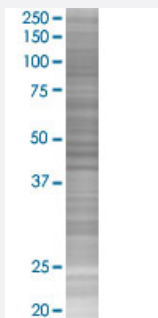


# GMCL1L 293T Cell Transient Overexpression Lysate(Denatured)

Catalog # H00064396-T02

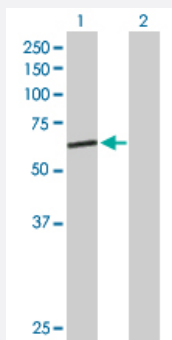
Size 100 uL

## Applications



### SDS-PAGE Gel

GMCL1L transfected lysate.



### Western Blot

Lane 1: GMCL1L transfected lysate ( 60.20 KDa)

Lane 2: Non-transfected lysate.

## Specification

**Transfected Cell Line** 293T

**Plasmid** pCMV-GMCL1L full-length

**Host** Human

**Theoretical MW (kDa)** 60.2

**Quality Control Testing** Transient overexpression cell lysate was tested with Anti-GMCL1L antibody ([H00064396-B01P](#)) by Western Blots.  
SDS-PAGE Gel  
GMCL1L transfected lysate.  
Western Blot  
Lane 1: GMCL1L transfected lysate ( 60.20 KDa)  
Lane 2: Non-transfected lysate.

**Storage Buffer**

1X Sample Buffer (50 mM Tris-HCl, 2% SDS, 10% glycerol, 300 mM 2-mercaptoethanol, 0.01% Bromophenol blue)

**Storage Instruction**

Store at -80°C. Aliquot to avoid repeated freezing and thawing.

## Applications

- Western Blot

## Gene Info — GMCL1L

**Entrez GeneID**[64396](#)**GeneBank Accession#**[BC033886](#)**Protein Accession#**[AAH33886.1](#)**Gene Name**

GMCL1L

**Gene Alias**

GCL, GMCL2

**Gene Description**

germ cell-less homolog 1 (Drosophila)-like

**Gene Ontology**[Hyperlink](#)**Gene Summary**

This locus shares a high degree of identity with the multi-exon germ cell-less gene on chromosome 2. Despite its single-exon nature, this chromosome 5 locus contains an open reading frame that could putatively encode a full-length germ cell-less related protein. [provided by RefSeq]

**Other Designations**

-