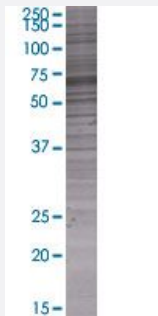


GMCL1L 293T Cell Transient Overexpression Lysate(Denatured)

Catalog # H00064396-T01

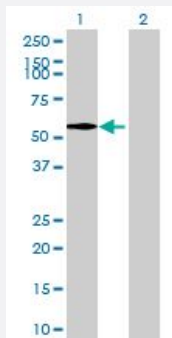
Size 100 uL

Applications



SDS-PAGE Gel

GMCL1L transfected lysate.



Western Blot

Lane 1: GMCL1L transfected lysate (60.2 KDa)

Lane 2: Non-transfected lysate.

Specification

Transfected Cell Line 293T

Plasmid pCMV-GMCL1L full-length

Host Human

Theoretical MW (kDa) 60.2

Quality Control Testing Transient overexpression cell lysate was tested with Anti-GMCL1L antibody ([H00064396-B01](#)) by Western Blots.
 SDS-PAGE Gel
 GMCL1L transfected lysate.
 Western Blot
 Lane 1: GMCL1L transfected lysate (60.2 KDa)
 Lane 2: Non-transfected lysate.

Storage Buffer

1X Sample Buffer (50 mM Tris-HCl, 2% SDS, 10% glycerol, 300 mM 2-mercaptoethanol, 0.01% Bromophenol blue)

Storage Instruction

Store at -80°C. Aliquot to avoid repeated freezing and thawing.

Applications

- Western Blot

Gene Info — GMCL1L

Entrez GeneID[64396](#)**GeneBank Accession#**[BC033886](#)**Protein Accession#**[AAH33886](#)**Gene Name**

GMCL1L

Gene Alias

GCL, GMCL2

Gene Description

germ cell-less homolog 1 (Drosophila)-like

Gene Ontology[Hyperlink](#)**Gene Summary**

This locus shares a high degree of identity with the multi-exon germ cell-less gene on chromosome 2. Despite its single-exon nature, this chromosome 5 locus contains an open reading frame that could putatively encode a full-length germ cell-less related protein. [provided by RefSeq]

Other Designations

-