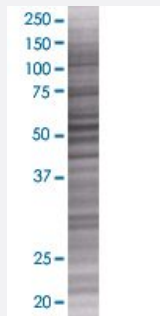


# HS1BP3 293T Cell Transient Overexpression Lysate(Denatured)

Catalog # H00064342-T01

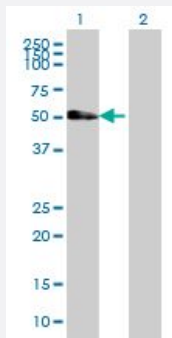
Size 100 uL

## Applications



### SDS-PAGE Gel

HS1BP3 transfected lysate.



### Western Blot

Lane 1: HS1BP3 transfected lysate ( 42.8 KDa)

Lane 2: Non-transfected lysate.

## Specification

Transfected Cell Line	293T
Plasmid	pCMV-HS1BP3 full-length
Host	Human
Theoretical MW (kDa)	42.8
Interspecies Antigen Sequence	Mouse (75); Rat (77)

**Quality Control Testing**

Transient overexpression cell lysate was tested with Anti-HS1BP3 antibody ([H00064342-B01](#)) by Western Blots.  
SDS-PAGE Gel  
HS1BP3 transfected lysate.  
Western Blot  
Lane 1: HS1BP3 transfected lysate ( 42.8 KDa)  
Lane 2: Non-transfected lysate.

**Storage Buffer**

1X Sample Buffer (50 mM Tris-HCl, 2% SDS, 10% glycerol, 300 mM 2-mercaptoethanol, 0.01% Bromophenol blue)

**Storage Instruction**

Store at -80°C. Aliquot to avoid repeated freezing and thawing.

## Applications

- Western Blot

## Gene Info — HS1BP3

**Entrez GeneID**[64342](#)**GeneBank Accession#**[BC050636](#)**Protein Accession#**[AAH50636](#)**Gene Name**

HS1BP3

**Gene Alias**

ETM2, FLJ14249, HS1-BP3

**Gene Description**

HCLS1 binding protein 3

**Omim ID**[609359](#)**Gene Ontology**[Hyperlink](#)**Gene Summary**

The protein encoded by this gene shares similarity with mouse Hs1bp3, an Hcls1/Hs1-interacting protein that may be involved in lymphocyte activation. [provided by RefSeq]

**Other Designations**

HS1-binding protein 3

## Disease

- [Essential tremor](#)

- [Genetic Predisposition to Disease](#)
- [Parkinson disease](#)