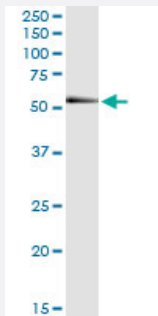


RNF25 (Human) IP-WB Antibody Pair

Catalog # H00064320-PW1

Size 1 Set

Applications



Immunoprecipitation of RNF25 transfected lysate using rabbit polyclonal anti-RNF25 and Protein A Magnetic Bead ([U0007](#)), and immunoblotted with mouse polyclonal anti-RNF25.

Specification

Product Description	This IP-WB antibody pair set comes with one antibody for immunoprecipitation and another to detect the precipitated protein in western blot.
Reactivity	Human
Interspecies Antigen Sequence	Mouse (82); Rat (84)
Quality Control Testing	Immunoprecipitation-Western Blot (IP-WB) Immunoprecipitation of RNF25 transfected lysate using rabbit polyclonal anti-RNF25 and Protein A Magnetic Bead (U0007), and immunoblotted with mouse polyclonal anti-RNF25.
Supplied Product	Antibody pair set content: 1. Antibody pair for IP: rabbit polyclonal anti-RNF25 (300 ul) 2. Antibody pair for WB: mouse polyclonal anti-RNF25 (50 ul)
Storage Instruction	Store reagents of the antibody pair set at -20°C or lower. Please aliquot to avoid repeated freeze thaw cycle. Reagents should be returned to -20°C storage immediately after use.

Applications

- Immunoprecipitation-Western Blot

[Protocol Download](#)

Gene Info — RNF25

Entrez GeneID	64320
Gene Name	RNF25
Gene Alias	AO7, FLJ13906
Gene Description	ring finger protein 25
Gene Ontology	Hyperlink
Gene Summary	The protein encoded by this gene contains a RING finger motif. The mouse counterpart of this protein has been shown to interact with RelA, the p65 subunit of NF-kappaB (NFKB), and modulate NFKB-mediated transcription activity. The mouse protein also binds ubiquitin-conjugating enzymes (E2s) and is a substrate for E2-dependent ubiquitination. [provided by RefSeq]
Other Designations	ring finger protein AO7