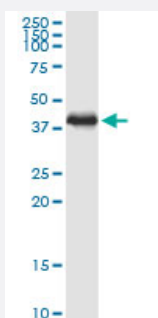


PDLIM2 (Human) IP-WB Antibody Pair

Catalog # H00064236-PW1

Size 1 Set

Applications



Immunoprecipitation of PDLIM2 transfected lysate using rabbit polyclonal anti-PDLIM2 and Protein A Magnetic Bead ([U0007](#)), and immunoblotted with mouse purified polyclonal anti-PDLIM2.

Specification

Product Description	This IP-WB antibody pair set comes with one antibody for immunoprecipitation and another to detect the precipitated protein in western blot.
Reactivity	Human
Interspecies Antigen Sequence	Mouse (78); Rat (76)
Quality Control Testing	Immunoprecipitation-Western Blot (IP-WB) Immunoprecipitation of PDLIM2 transfected lysate using rabbit polyclonal anti-PDLIM2 and Protein A Magnetic Bead (U0007), and immunoblotted with mouse purified polyclonal anti-PDLIM2.
Supplied Product	Antibody pair set content: 1. Antibody pair for IP: rabbit polyclonal anti-PDLIM2 (300 ul) 2. Antibody pair for WB: mouse purified polyclonal anti-PDLIM2 (50 ug)
Storage Instruction	Store reagents of the antibody pair set at -20°C or lower. Please aliquot to avoid repeated freeze thaw cycle. Reagents should be returned to -20°C storage immediately after use.

Applications

- Immunoprecipitation-Western Blot

[Protocol Download](#)

Gene Info — PDLIM2

Entrez GeneID	64236
Gene Name	PDLIM2
Gene Alias	FLJ34715, MYSTIQUE, SLIM
Gene Description	PDZ and LIM domain 2 (mystique)
Omim ID	609722
Gene Ontology	Hyperlink
Other Designations	PDZ and LIM domain 2