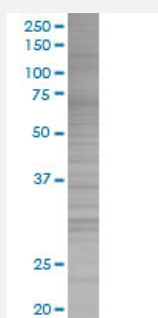


MS4A5 293T Cell Transient Overexpression Lysate(Denatured)

Catalog # H00064232-T02

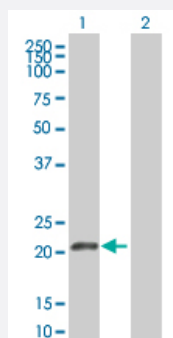
Size 100 uL

Applications



SDS-PAGE Gel

MS4A5 transfected lysate.



Western Blot

Lane 1: MS4A5 transfected lysate (22.3 KDa)

Lane 2: Non-transfected lysate.

Specification

Transfected Cell Line 293T

Plasmid pCMV-MS4A5 full-length

Host Human

Theoretical MW (kDa) 22.3

Quality Control Testing Transient overexpression cell lysate was tested with Anti-MS4A5 antibody ([H00064232-B02](#)) by Western Blots.
SDS-PAGE Gel
MS4A5 transfected lysate.
Western Blot
Lane 1: MS4A5 transfected lysate (22.3 KDa)
Lane 2: Non-transfected lysate.

Storage Buffer	1X Sample Buffer (50 mM Tris-HCl, 2% SDS, 10% glycerol, 300 mM 2-mercaptoethanol, 0.01% Bromophenol blue)
Storage Instruction	Store at -80°C. Aliquot to avoid repeated freezing and thawing.

Applications

- Western Blot

Gene Info — MS4A5

Entrez GeneID	64232
GeneBank Accession#	NM_023945.2
Protein Accession#	-
Gene Name	MS4A5
Gene Alias	CD20-L2, CD20L2, MGC34184, TETM4
Gene Description	membrane-spanning 4-domains, subfamily A, member 5
Omim ID	606499
Gene Ontology	Hyperlink
Gene Summary	This gene encodes a member of the membrane-spanning 4A gene family. Members of this nascent protein family are characterized by common structural features and similar intron/exon splice boundaries and display unique expression patterns among hematopoietic cells and nonlymphoid tissues. Though this member is not expressed in hematopoietic cells specifically, it may be involved in signal transduction like many of its related family members. The gene encoding this protein is localized to 11q12, among a cluster of family members. [provided by RefSeq]
Other Designations	CD20 antigen-like 2 testis-expressed transmembrane-4 protein