

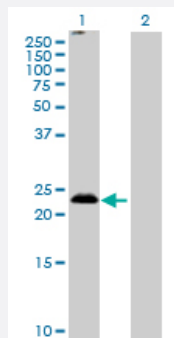
MaxPab®

MS4A5 purified MaxPab mouse polyclonal antibody (B01P)

Catalog # H00064232-B01P

Size 50 ug

Applications



Western Blot (Transfected lysate)

Western Blot analysis of MS4A5 expression in transfected 293T cell line ([H00064232-T01](#)) by MS4A5 MaxPab polyclonal antibody.

Lane 1: MS4A5 transfected lysate(22.11 KDa).

Lane 2: Non-transfected lysate.

Specification

Product Description	Mouse polyclonal antibody raised against a full-length human MS4A5 protein.
Immunogen	MS4A5 (AAH29884, 1 a.a. ~ 200 a.a) full-length human protein.
Sequence	MDSSTAHSVPVFLVFPPEITASEYESTELPATTFTSQSPLQKLFARKMKILGTIQLFGIMTFSFGVIFL FTLLKPYPRFPFIFLSGYPFWGSVLFINSGAFLIAVKRKTETLIIILSRIMNFLSALGAIAGIILLTFGFILD QNYICGYSHQNSQCKAVTVLFLGILITLMTFSIIELFISLPFSILGCHSEDCDCEQCC
Host	Mouse
Reactivity	Human
Quality Control Testing	Antibody reactive against mammalian transfected lysate.
Storage Buffer	In 1x PBS, pH 7.4
Storage Instruction	Store at -20°C or lower. Aliquot to avoid repeated freezing and thawing.

Applications

- Western Blot (Transfected lysate)

Western Blot analysis of MS4A5 expression in transfected 293T cell line ([H00064232-T01](#)) by MS4A5 MaxPab polyclonal antibody.

Lane 1: MS4A5 transfected lysate(22.11 KDa).

Lane 2: Non-transfected lysate.

[Protocol Download](#)

Gene Info — MS4A5

Entrez GeneID [64232](#)

GeneBank Accession# [BC029884](#)

Protein Accession# [AAH29884](#)

Gene Name MS4A5

Gene Alias CD20-L2, CD20L2, MGC34184, TETM4

Gene Description membrane-spanning 4-domains, subfamily A, member 5

Omim ID [606499](#)

Gene Ontology [Hyperlink](#)

Gene Summary This gene encodes a member of the membrane-spanning 4A gene family. Members of this nascent protein family are characterized by common structural features and similar intron/exon splice boundaries and display unique expression patterns among hematopoietic cells and nonlymphoid tissues. Though this member is not expressed in hematopoietic cells specifically, it may be involved in signal transduction like many of its related family members. The gene encoding this protein is localized to 11q12, among a cluster of family members. [provided by RefSeq]

Other Designations CD20 antigen-like 2|testis-expressed transmembrane-4 protein