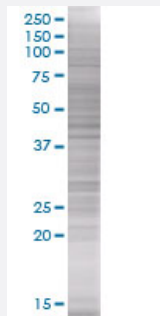


MS4A6A 293T Cell Transient Overexpression Lysate(Denatured)

Catalog # H00064231-T01

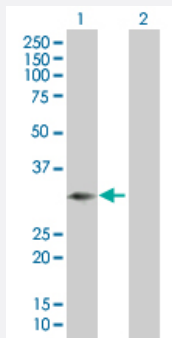
Size 100 uL

Applications



SDS-PAGE Gel

MS4A6A transfected lysate



Western Blot

Lane 1: MS4A6A transfected lysate (27.39 KDa).

Lane 2: Non-transfected lysate.

Specification

Transfected Cell Line 293T

Plasmid pCMV-MS4A6A full-length

Host Human

Theoretical MW (kDa) 27.39

Quality Control Testing Transient overexpression cell lysate was tested with Anti-MS4A6A antibody ([H00064231-B01](#)) by Western Blots.

SDS-PAGE Gel
MS4A6A transfected lysate
Western Blot
Lane 1: MS4A6A transfected lysate (27.39 KDa).
Lane 2: Non-transfected lysate.

Storage Buffer	1X Sample Buffer (50 mM Tris-HCl, 2% SDS, 10% glycerol, 300 mM 2-mercaptoethanol, 0.01% Bromophenol blue)
Storage Instruction	Store at -80°C. Aliquot to avoid repeated freezing and thawing.

Applications

- Western Blot

Gene Info — MS4A6A

Entrez GeneID	64231
GeneBank Accession#	BC022854
Protein Accession#	AAH22854
Gene Name	MS4A6A
Gene Alias	4SPAN3, 4SPAN3.2, CD20L3, CDA01, MGC131944, MGC22650, MS4A6, MST090, MSTP090
Gene Description	membrane-spanning 4-domains, subfamily A, member 6A
Omim ID	606548
Gene Ontology	Hyperlink
Gene Summary	This gene encodes a member of the membrane-spanning 4A gene family. Members of this nascent protein family are characterized by common structural features and similar intron/exon splice boundaries and display unique expression patterns among hematopoietic cells and nonlymphoid tissues. The gene encoding this protein is localized to 11q12.1, among a cluster of family members. Alternative splicing of this gene results in several transcript variants. [provided by RefSeq]
Other Designations	CD20-like precursor HAIRB-iso MS4A6A-polymorph four-span transmembrane protein 3.1 four-span transmembrane protein 3.2 membrane-spanning 4-domains, subfamily A, member 6A, isoform 2

Disease

- [Adenocarcinoma](#)
- [Esophageal Neoplasms](#)