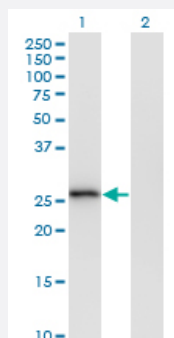


MS4A6A monoclonal antibody (M02), clone 2D12

Catalog # H00064231-M02

Size 100 ug

Applications

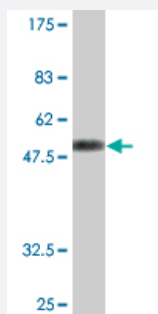


Western Blot (Transfected lysate)

Western Blot analysis of MS4A6A expression in transfected 293T cell line by MS4A6A monoclonal antibody (M02), clone 2D12.

Lane 1: MS4A6A transfected lysate(26.9 KDa).

Lane 2: Non-transfected lysate.



Western Blot detection against Immunogen (52.8 KDa) .

Specification

Product Description

Mouse monoclonal antibody raised against a full-length recombinant MS4A6A.

Immunogen

MS4A6A (AAH22854, 1 a.a. ~ 248 a.a) full-length recombinant protein with GST tag. MW of the GST tag alone is 26 KDa.

Sequence

MTSQPVNETIVPPSNVINFSQAEKPEPTNQGGQDSLKKHLHAEIKVIGTIQILCGMMVLSLGILASA
SFSPNFTQVTSTLLNSAYPFIGPFFFIIISGSLSIATEKRLTKLLVHSSLVGSILSALSALVGFIIISVKQA
TLNPASLQCELDKNNIPTRSYVSFYHDSLYTTDCYTAKASLAGSLSLMLICTLLEFCLAVLTAVLR
WKQAYSDFPGSVLFLPHSYIGNSGMSSKMTDHCYEEELLTS

Host

Mouse

Reactivity

Human

Isotype	IgG2a Kappa
Quality Control Testing	Antibody Reactive Against Recombinant Protein. Western Blot detection against Immunogen (52.8 KDa) .
Storage Buffer	In 1x PBS, pH 7.4
Storage Instruction	Store at -20°C or lower. Aliquot to avoid repeated freezing and thawing.

Applications

- Western Blot (Transfected lysate)

Western Blot analysis of MS4A6A expression in transfected 293T cell line by MS4A6A monoclonal antibody (M02), clone 2D12.

Lane 1: MS4A6A transfected lysate(26.9 KDa).

Lane 2: Non-transfected lysate.

[Protocol Download](#)

- Western Blot (Recombinant protein)

[Protocol Download](#)

- ELISA

Gene Info — MS4A6A

Entrez GeneID	64231
GeneBank Accession#	BC022854
Protein Accession#	AAH22854
Gene Name	MS4A6A
Gene Alias	4SPAN3, 4SPAN3.2, CD20L3, CDA01, MGC131944, MGC22650, MS4A6, MST090, MSTP090
Gene Description	membrane-spanning 4-domains, subfamily A, member 6A
Omim ID	606548
Gene Ontology	Hyperlink

Gene Summary

This gene encodes a member of the membrane-spanning 4A gene family. Members of this nascent protein family are characterized by common structural features and similar intron/exon splice boundaries and display unique expression patterns among hematopoietic cells and nonlymphoid tissues. The gene encoding this protein is localized to 11q12.1, among a cluster of family members. Alternative splicing of this gene results in several transcript variants. [provided by RefSeq]

Other Designations

CD20-like precursor|HAIRB-iso|MS4A6A-polymorph|four-span transmembrane protein 3.1|four-span transmembrane protein 3.2|membrane-spanning 4-domains, subfamily A, member 6A, isoform 2

Disease

- [Adenocarcinoma](#)
- [Esophageal Neoplasms](#)