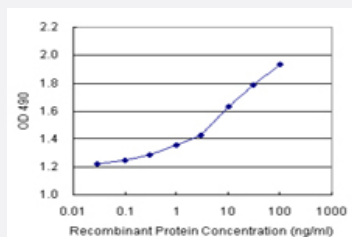


SEMA4A (Human) Matched Antibody Pair

Catalog # H00064218-AP11

Size 1 Set

Applications



Sandwich ELISA detection sensitivity ranging from 0.1 ng/ml to 100 ng/ml.

Specification

Product Description	This antibody pair set comes with a matched antibody pair to detect and quantify the protein level of human SEMA4A.
Reactivity	Human
Interspecies Antigen Sequence	Mouse (83); Rat (83)
Quality Control Testing	Standard curve using recombinant protein (H00064218-P01) as an analyte. Sandwich ELISA detection sensitivity ranging from 0.1 ng/ml to 100 ng/ml.
Supplied Product	Antibody pair set content: 1. Capture antibody: rabbit MaxPab® affinity purified polyclonal anti-SEMA4A (100 ug) 2. Detection antibody: mouse monoclonal anti-SEMA4A, IgG2a Kappa (20 ug) *Reagents are sufficient for at least 1-2 x 96 well plates using recommended protocols.
Storage Instruction	Store reagents of the antibody pair set at -20°C or lower. Please aliquot to avoid repeated freeze thaw cycle. Reagents should be returned to -20°C storage immediately after use.

Applications

- ELISA Pair (Recombinant protein)

[Protocol Download](#)

Gene Info — SEMA4A

Entrez GeneID	64218
Gene Name	SEMA4A
Gene Alias	CORD10, FLJ12287, RP35, SEMAB, SEMB
Gene Description	sema domain, immunoglobulin domain (Ig), transmembrane domain (TM) and short cytoplasmic domain, (semaphorin) 4A
Omim ID	607292 610282 610283
Gene Ontology	Hyperlink
Gene Summary	SEMA4A is a member of the semaphorin family of soluble and transmembrane proteins. Semaphorins are involved in guidance of axonal migration during neuronal development and in immune responses.[supplied by OMIM]
Other Designations	OTTHUMP00000015916 OTTHUMP00000015917 OTTHUMP00000015918 sema domain, immunoglobulin domain (Ig), transmembrane domain (TM) and short cytoplasmic domain, 4A semaphorin B

Pathway

- [Axon guidance](#)

Disease

- [Retinal Diseases](#)