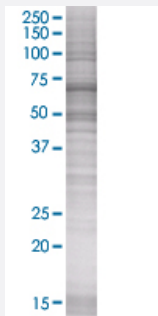


LEPRE1 293T Cell Transient Overexpression Lysate(Denatured)

Catalog # H00064175-T01

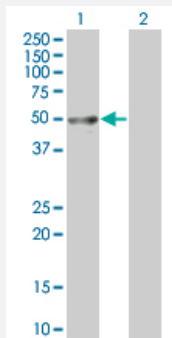
Size 100 uL

Applications



SDS-PAGE Gel

LEPRE1 transfected lysate



Western Blot

Lane 1: LEPRE1 transfected lysate (42.9 KDa).

Lane 2: Non-transfected lysate.

Specification

Transfected Cell Line	293T
Plasmid	pCMV-LEPRE1 full-length
Host	Human
Theoretical MW (kDa)	42.9
Interspecies Antigen Sequence	Mouse (91); Rat (92)

Quality Control Testing

Transient overexpression cell lysate was tested with Anti-LEPRE1 antibody ([H00064175-B01](#)) by Western Blots.
SDS-PAGE Gel
LEPRE1 transfected lysate
Western Blot
Lane 1: LEPRE1 transfected lysate (42.9 KDa).
Lane 2: Non-transfected lysate.

Storage Buffer

1X Sample Buffer (50 mM Tris-HCl, 2% SDS, 10% glycerol, 300 mM 2-mercaptoethanol, 0.01% Bromophenol blue)

Storage Instruction

Store at -80°C. Aliquot to avoid repeated freezing and thawing.

Applications

- Western Blot

Gene Info — LEPRE1

Entrez GeneID[64175](#)**GeneBank Accession#**[BC015309](#)**Protein Accession#**[AAH15309](#)**Gene Name**

LEPRE1

Gene Alias

GROS1, MGC117314, P3H1

Gene Description

leucine proline-enriched proteoglycan (leprecan) 1

Omim ID[610339 610915](#)**Gene Ontology**[Hyperlink](#)**Gene Summary**

This gene encodes an enzyme that is a member of the collagen prolyl hydroxylase family. These enzymes are localized to the endoplasmic reticulum and their activity is required for proper collagen synthesis and assembly. Mutations in this gene are associated with osteogenesis imperfecta type VIII. Two alternatively spliced transcript variants encoding different isoforms have been described. Other variants may exist, but their biological validity has not been determined. [provided by RefSeq]

Other Designations

OTTHUMP00000008736|growth suppressor 1|leprecan|leprecan 1|prolyl 3-hydroxylase 1