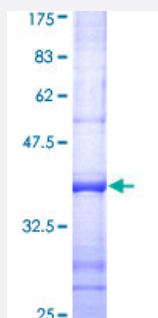


LEPRE1 (Human) Recombinant Protein (Q01)

Catalog # H00064175-Q01

Size 25 ug, 10 ug

Applications



Specification

Product Description	Human LEPRE1 partial ORF (AAH15309, 1 a.a. - 100 a.a.) recombinant protein with GST-tag at N-terminal.
Sequence	DPRVREVMNQNLAYYAAMLGEEHTRSIGPRESAKEYRQRSLLLEKELLFFAYDVFGIPFVDPDSWT PEEVIPKRLQEKQKSERETAVRISQEIGNLMKEIE
Host	Wheat Germ (in vitro)
Theoretical MW (kDa)	36.63
Interspecies Antigen Sequence	Mouse (91); Rat (92)
Preparation Method	in vitro wheat germ expression system
Purification	Glutathione Sepharose 4 Fast Flow
Quality Control Testing	12.5% SDS-PAGE Stained with Coomassie Blue.
Storage Buffer	50 mM Tris-HCl, 10 mM reduced Glutathione, pH=8.0 in the elution buffer.
Storage Instruction	Store at -80°C. Aliquot to avoid repeated freezing and thawing.
Note	Best use within three months from the date of receipt of this protein.

Applications

- Enzyme-linked Immunoabsorbent Assay
- Western Blot (Recombinant protein)
- Antibody Production
- Protein Array

Gene Info — LEPRE1

Entrez GeneID [64175](#)

GeneBank Accession# [BC015309](#)

Protein Accession# [AAH15309](#)

Gene Name LEPRE1

Gene Alias GROS1, MGC117314, P3H1

Gene Description leucine proline-enriched proteoglycan (leprecan) 1

Omim ID [610339](#) [610915](#)

Gene Ontology [Hyperlink](#)

Gene Summary This gene encodes an enzyme that is a member of the collagen prolyl hydroxylase family. These enzymes are localized to the endoplasmic reticulum and their activity is required for proper collagen synthesis and assembly. Mutations in this gene are associated with osteogenesis imperfecta type VIII. Two alternatively spliced transcript variants encoding different isoforms have been described. Other variants may exist, but their biological validity has not been determined. [provided by RefSeq]

Other Designations OTTHUMP00000008736|growth suppressor 1|leprecan|leprecan 1|prolyl 3-hydroxylase 1