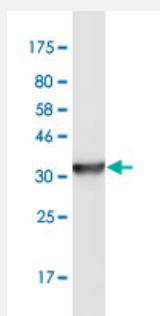


LEPRE1 monoclonal antibody (M02), clone 3A4

Catalog # H00064175-M02

Size 100 ug

Applications



Western Blot detection against Immunogen (36.63 KDa) .

Specification

Product Description	Mouse monoclonal antibody raised against a partial recombinant LEPRE1.
Immunogen	LEPRE1 (AAH15309, 1 a.a. ~ 100 a.a) partial recombinant protein with GST tag. MW of the GST tag alone is 26 KDa.
Sequence	DPRVREVMNQNLAYYAAMLGEEHTRSIGPRESKEYRQRSLLLEKELLFFAYDVFGIPFVDPDSWT PEEVIPKRLQEKQKSERETAVRISQEIGNLMKEIE
Host	Mouse
Reactivity	Human
Interspecies Antigen Sequence	Mouse (91); Rat (92)
Isotype	IgG2a Kappa
Quality Control Testing	Antibody Reactive Against Recombinant Protein. Western Blot detection against Immunogen (36.63 KDa) .
Storage Buffer	In 1x PBS, pH 7.4
Storage Instruction	Store at -20°C or lower. Aliquot to avoid repeated freezing and thawing.

Applications

- Western Blot (Recombinant protein)

[Protocol Download](#)

- ELISA

Gene Info — LEPRE1

Entrez GeneID [64175](#)

GeneBank Accession# [BC015309](#)

Protein Accession# [AAH15309](#)

Gene Name LEPRE1

Gene Alias GROS1, MGC117314, P3H1

Gene Description leucine proline-enriched proteoglycan (leprecan) 1

Omim ID [610339 610915](#)

Gene Ontology [Hyperlink](#)

Gene Summary This gene encodes an enzyme that is a member of the collagen prolyl hydroxylase family. These enzymes are localized to the endoplasmic reticulum and their activity is required for proper collagen synthesis and assembly. Mutations in this gene are associated with osteogenesis imperfecta type VIII. Two alternatively spliced transcript variants encoding different isoforms have been described. Other variants may exist, but their biological validity has not been determined. [provided by RefSeq]

Other Designations OTTHUMP00000008736|growth suppressor 1|leprecan|leprecan 1|prolyl 3-hydroxylase 1