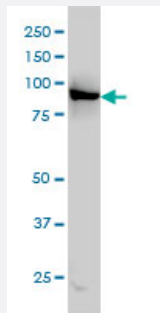


# LEPRE1 monoclonal antibody (M01), clone 3C7

Catalog # H00064175-M01

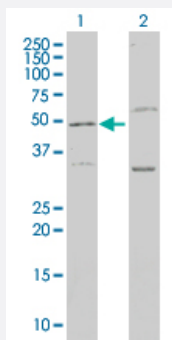
Size 100 ug

## Applications



### Western Blot (Cell lysate)

LEPRE1 monoclonal antibody (M01), clone 3C7 Western Blot analysis of LEPRE1 expression in HeLa ( Cat # L013V1 ).

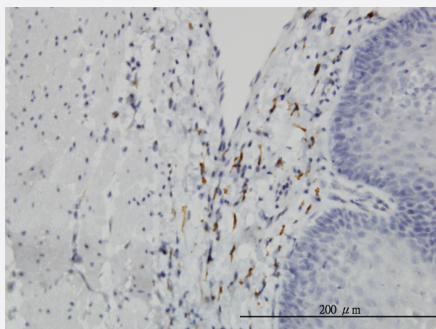


### Western Blot (Transfected lysate)

Western Blot analysis of LEPRE1 expression in transfected 293T cell line by LEPRE1 monoclonal antibody (M01), clone 3C7.

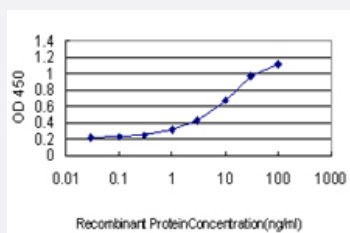
Lane 1: LEPRE1 transfected lysate(46 KDa).

Lane 2: Non-transfected lysate.



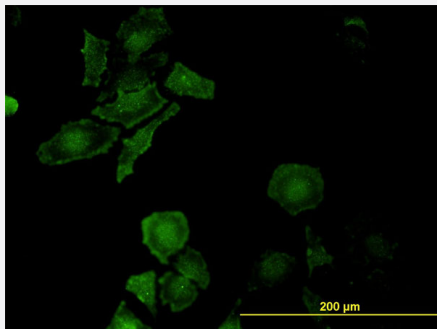
### Immunohistochemistry (Formalin/PFA-fixed paraffin-embedded sections)

Immunoperoxidase of monoclonal antibody to LEPRE1 on formalin-fixed paraffin-embedded human esophagus. [antibody concentration 6 ug/ml]



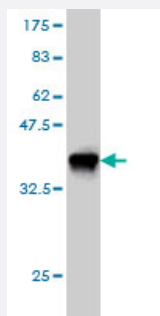
### Sandwich ELISA (Recombinant protein)

Detection limit for recombinant GST tagged LEPRE1 is approximately 0.3ng/ml as a capture antibody.



## Immunofluorescence

Immunofluorescence of monoclonal antibody to LEPRE1 on HeLa cell.  
[antibody concentration 10 ug/ml]



Western Blot detection against Immunogen (36.63 KDa) .

## Specification

|                                      |  |
|--------------------------------------|--|
| <b>Product Description</b>           | Mouse monoclonal antibody raised against a partial recombinant LEPRE1.   |
| <b>Immunogen</b>                     | LEPRE1 (AAH15309, 1 a.a. ~ 100 a.a) partial recombinant protein with GST tag. MW of the GST tag alone is 26 KDa. |
| <b>Sequence</b>                      | DPRVREVMNQNLAYYAAMLGEEHTRSIGPRESAKEYRQRSLLLEKELLFFAYDVFGIPFVDPDSWT<br>PEEVIPKRLQEKQKSERETAVRISQEIGNLMKEIE        |
| <b>Host</b>                          | Mouse  |
| <b>Reactivity</b>                    | Human  |
| <b>Interspecies Antigen Sequence</b> | Mouse (91); Rat (92)   |
| <b>Isotype</b>                       | IgG2a Kappa  |
| <b>Quality Control Testing</b>       | Antibody Reactive Against Recombinant Protein.<br>Western Blot detection against Immunogen (36.63 KDa) .         |
| <b>Storage Buffer</b>                | In 1x PBS, pH 7.4  |
| <b>Storage Instruction</b>           | Store at -20°C or lower. Aliquot to avoid repeated freezing and thawing.   |

## Applications

- Western Blot (Cell lysate)

LEPRE1 monoclonal antibody (M01), clone 3C7 Western Blot analysis of LEPRE1 expression in HeLa ( Cat # L013V1 ).

[Protocol Download](#)

- Western Blot (Transfected lysate)

Western Blot analysis of LEPRE1 expression in transfected 293T cell line by LEPRE1 monoclonal antibody (M01), clone 3C7.

Lane 1: LEPRE1 transfected lysate(46 KDa).

Lane 2: Non-transfected lysate.

[Protocol Download](#)

- Western Blot (Recombinant protein)

[Protocol Download](#)

- Immunohistochemistry (Formalin/PFA-fixed paraffin-embedded sections)

Immunoperoxidase of monoclonal antibody to LEPRE1 on formalin-fixed paraffin-embedded human esophagus. [antibody concentration 6 ug/ml]

[Protocol Download](#)

- Sandwich ELISA (Recombinant protein)

Detection limit for recombinant GST tagged LEPRE1 is approximately 0.3ng/ml as a capture antibody.

[Protocol Download](#)

- ELISA

- Immunofluorescence

Immunofluorescence of monoclonal antibody to LEPRE1 on HeLa cell. [antibody concentration 10 ug/ml]

## Gene Info — LEPRE1

|               |                       |
|---------------|-----------------------|
| Entrez GeneID | <a href="#">64175</a> |
|---------------|-----------------------|

|                     |                          |
|---------------------|--------------------------|
| GeneBank Accession# | <a href="#">BC015309</a> |
|---------------------|--------------------------|

|                    |                          |
|--------------------|--------------------------|
| Protein Accession# | <a href="#">AAH15309</a> |
|--------------------|--------------------------|

|                    |  |
|--------------------|--|
| Gene Name          | LEPRE1   |
| Gene Alias         | GROS1, MGC117314, P3H1   |
| Gene Description   | leucine proline-enriched proteoglycan (leprecan) 1   |
| Omim ID            | <a href="#">610339 610915</a>  |
| Gene Ontology      | <a href="#">Hyperlink</a>  |
| Gene Summary       | This gene encodes an enzyme that is a member of the collagen prolyl hydroxylase family. These enzymes are localized to the endoplasmic reticulum and their activity is required for proper collagen synthesis and assembly. Mutations in this gene are associated with osteogenesis imperfecta type VIII. Two alternatively spliced transcript variants encoding different isoforms have been described. Other variants may exist, but their biological validity has not been determined. [provided by RefSeq] |
| Other Designations | OTTHUMP00000008736 growth suppressor 1 leprecan leprecan 1 prolyl 3-hydroxylase 1  |

## Publication Reference

- [Localization of collagen modifying enzymes on fibroblastic reticular cells and follicular dendritic cells in non-neoplastic and neoplastic lymphoid tissues.](#)

Ohe R, Aung NY, Meng H, Kabasawa T, Suto A, Tamazawa N, Yang S, Kato T, Yamakawa M.

Leukemia and Lymphoma 2016 Jul; 57(7):1687.

Application: IHC-P, Human, Non-neoplastic lymphoid

- [Proteomic dissection of the VHL interactome.](#)

Lai Y, Song M, Hakala K, Weintraub ST, Shiio Y.

Journal of Proteome Research 2011 Nov; 10(11):5175.

Application: WB-Tr, Human, HEK 293T cells

- [Severe osteogenesis imperfecta in cyclophilin B-deficient mice.](#)

Choi JW, Sutor SL, Lindquist L, Evans GL, Madden BJ, Bergen HR 3rd, Hefferan TE, Yaszemski MJ, Bram RJ.

PLoS Genetics 2009 Dec; 5(12):e1000750.

Application: WB, Mouse, Mouse embryonic fibroblasts (MEFs) and skin fibroblasts

- [Prolyl 3-hydroxylase 1 deficiency causes a recessive metabolic bone disorder resembling lethal/severe osteogenesis imperfecta.](#)

Cabral WA, Chang W, Barnes AM, Weis M, Scott MA, Leikin S, Makareeva E, Kuznetsova NV, Rosenbaum KN, Tift CJ, Bulas DI, Kozma C, Smith PA, Eyre DR, Marini JC.

Nature Genetics 2007 Feb; 39(3):359.

Application: WB, Mouse, Mouse osteoblasts