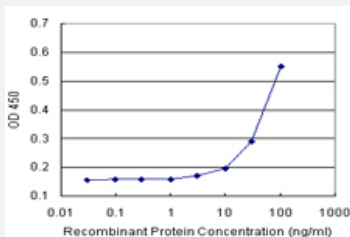


C17orf75 (Human) Matched Antibody Pair

Catalog # H00064149-AP11 Size 1 Set

Applications



Sandwich ELISA detection sensitivity ranging from 10 ng/ml to 100 ng/ml.

Specification

Product Description	This antibody pair set comes with a matched antibody pair to detect and quantify the protein level of human C17orf75.
Reactivity	Human
Interspecies Antigen Sequence	Mouse (90); Rat (89)
Quality Control Testing	Standard curve using recombinant protein (H00064149-P01) as an analyte. Sandwich ELISA detection sensitivity ranging from 10 ng/ml to 100 ng/ml.
Supplied Product	Antibody pair set content: 1. Capture antibody: rabbit MaxPab® affinity purified polyclonal anti-C17orf75 (100 ug) 2. Detection antibody: mouse monoclonal anti-C17orf75, IgG1 Kappa (20 ug) *Reagents are sufficient for at least 1-2 x 96 well plates using recommended protocols.
Storage Instruction	Store reagents of the antibody pair set at -20°C or lower. Please aliquot to avoid repeated freeze thaw cycle. Reagents should be returned to -20°C storage immediately after use.

Applications

- ELISA Pair (Recombinant protein)

[Protocol Download](#)

Gene Info — C17orf75

Entrez GeneID	64149
Gene Name	C17orf75
Gene Alias	NJMU-R1
Gene Description	chromosome 17 open reading frame 75
Gene Ontology	Hyperlink
Other Designations	hypothetical protein LOC64149 spermatogenesis-related protein