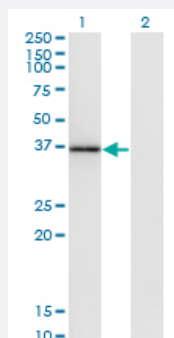


MOAP1 monoclonal antibody (M02), clone 4A1

Catalog # H00064112-M02

Size 100 ug

Applications

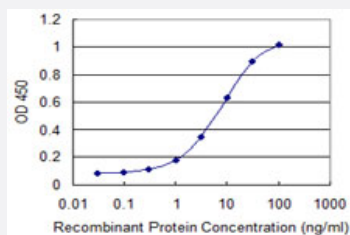


Western Blot (Transfected lysate)

Western Blot analysis of MOAP1 expression in transfected 293T cell line by MOAP1 monoclonal antibody (M02), clone 4A1.

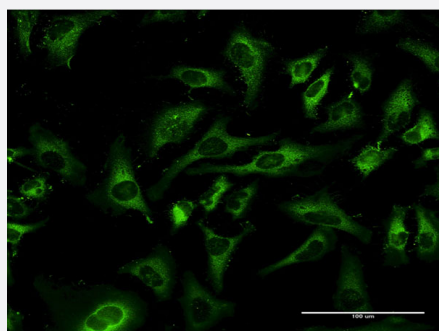
Lane 1: MOAP1 transfected lysate(39.5 KDa).

Lane 2: Non-transfected lysate.



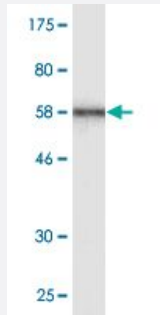
Sandwich ELISA (Recombinant protein)

Detection limit for recombinant GST tagged MOAP1 is 0.3 ng/ml as a capture antibody.



Immunofluorescence

Immunofluorescence of monoclonal antibody to MOAP1 on HeLa cell .
[antibody concentration 10 ug/ml]



Western Blot detection against Immunogen (64.35 KDa) .

Specification

Product Description	Mouse monoclonal antibody raised against a full-length recombinant MOAP1.
Immunogen	MOAP1 (AAH15044.1, 1 a.a. ~ 351 a.a) full-length recombinant protein with GST tag. MW of the GST tag alone is 26 KDa.
Sequence	<p>MTLRLLLEDWCRGMDMNP RKALLIAGISQSCSVAEIEEALQAGLAPLGEYRLLGRMFRRDENRKVA</p> <p>LVGLTAETSHALVPKEIPGKGGWVRVIFKPPDPDNTFLSRLNEFLAGEGMTVGELSRALGHENGSL</p> <p>DPEQGMIPEMWAPMLAQALEALQPALQCLKYKKLRVFSGRESPEPGEEEFGRWMFHTTQMIKA</p> <p>WQVPDVEKRRRLLESLRGPALDVIRVLKINNPLITVDECLQALEEVFGVTDNPRELQVKYLTTYQK</p> <p>DEEKLSAYVLRLEPLLQKLVQRGAIERDAVNQARLDQVIAGAVHKTIRRELNLPEDGPAPGFLQLL</p> <p>VLIKDYEAEEEEALLQAILEGNFT</p>
Host	Mouse
Reactivity	Human
Interspecies Antigen Sequence	Mouse (76); Rat (76)
Isotype	IgG1 Kappa
Quality Control Testing	Antibody Reactive Against Recombinant Protein. Western Blot detection against Immunogen (64.35 KDa) .
Storage Buffer	In 1x PBS, pH 7.4
Storage Instruction	Store at -20°C or lower. Aliquot to avoid repeated freezing and thawing.

Applications

- Western Blot (Transfected lysate)

Western Blot analysis of MOAP1 expression in transfected 293T cell line by MOAP1 monoclonal antibody (M02), clone 4A1.

Lane 1: MOAP1 transfected lysate(39.5 KDa).

Lane 2: Non-transfected lysate.

[Protocol Download](#)

- Western Blot (Recombinant protein)

[Protocol Download](#)

- Sandwich ELISA (Recombinant protein)

Detection limit for recombinant GST tagged MOAP1 is 0.3 ng/ml as a capture antibody.

[Protocol Download](#)

- ELISA

- Immunofluorescence

Immunofluorescence of monoclonal antibody to MOAP1 on HeLa cell . [antibody concentration 10 ug/ml]

Gene Info — MOAP1

Entrez GeneID [64112](#)

GeneBank Accession# [BC015044](#)

Protein Accession# [AAH15044.1](#)

Gene Name MOAP1

Gene Alias MAP-1, PNMA4

Gene Description modulator of apoptosis 1

Omim ID [609485](#)

Gene Ontology [Hyperlink](#)

Gene Summary The protein encoded by this gene was identified by its interaction with apoptosis regulator BAX protein. This protein contains a Bcl-2 homology 3 (BH3)-like motif, which is required for the association with BAX. When overexpressed, this gene has been shown to mediate caspase-dependent apoptosis. [provided by RefSeq]

Other Designations paraneoplastic antigen like 4