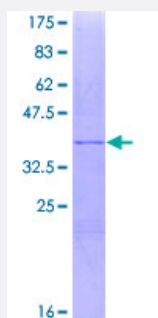


MAGEF1 (Human) Recombinant Protein (Q01)

Catalog # H00064110-Q01

Size 25 ug, 10 ug

Applications



Specification

Product Description	Human MAGEF1 partial ORF (NP_071432, 198 a.a. - 307 a.a.) recombinant protein with GST-tag at N-terminal.
Sequence	VQPSKYHFLFGYPKRLIMEDFVQQRYSYRRVPHTNPPEYEFWSGPRSNLEISKMEVLGFVAKLHKKEPQHWPVQYREALADEADRARAKARAEASMRARASARAGIHLW
Host	Wheat Germ (in vitro)
Theoretical MW (kDa)	37.84
Preparation Method	in vitro wheat germ expression system
Purification	Glutathione Sepharose 4 Fast Flow
Quality Control Testing	12.5% SDS-PAGE Stained with Coomassie Blue.
Storage Buffer	50 mM Tris-HCl, 10 mM reduced Glutathione, pH=8.0 in the elution buffer.
Storage Instruction	Store at -80°C. Aliquot to avoid repeated freezing and thawing.
Note	Best use within three months from the date of receipt of this protein.

Applications

- Enzyme-linked Immunoabsorbent Assay
- Western Blot (Recombinant protein)
- Antibody Production
- Protein Array

Gene Info — MAGEF1

Entrez GeneID [64110](#)

GeneBank Accession# [NM_022149](#)

Protein Accession# [NP_071432](#)

Gene Name MAGEF1

Gene Alias MGC19617

Gene Description melanoma antigen family F, 1

Omim ID [609267](#)

Gene Ontology [Hyperlink](#)

Gene Summary This intronless gene encodes a member of the MAGE superfamily. It is ubiquitously expressed in normal tissues and in tumor cells. This gene includes a microsatellite repeat in the coding region. [provided by RefSeq]

Other Designations MAGE-F1 antigen|melanoma-associated antigen F1