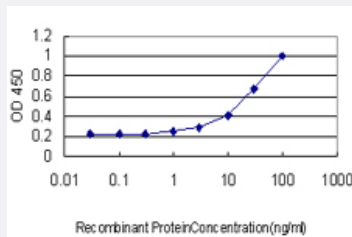


# CRLF2 monoclonal antibody (M03), clone 4A11

Catalog # H00064109-M03

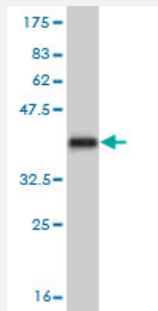
Size 100 ug

## Applications



### Sandwich ELISA (Recombinant protein)

Detection limit for recombinant GST tagged CRLF2 is approximately 3ng/ml as a capture antibody.



Western Blot detection against Immunogen (37.84 KDa) .

## Specification

<b>Product Description</b>	Mouse monoclonal antibody raised against a partial recombinant CRLF2.
<b>Immunogen</b>	CRLF2 (NP_071431, 23 a.a. ~ 132 a.a) partial recombinant protein with GST tag. MW of the GST tag alone is 26 KDa.
<b>Sequence</b>	QGGAEEGVQIQIYFNLETVQVTWNASKYSRTNLTFHYRFNGDEAYDQCTNYLLQEGHTSGCLLDA EQRDDILYFSIRNGTHPVFTASRWMVYLLKPSSPKHVRFSWHQD
<b>Host</b>	Mouse
<b>Reactivity</b>	Human
<b>Isotype</b>	IgG2a Kappa

**Quality Control Testing**

Antibody Reactive Against Recombinant Protein.  
Western Blot detection against Immunogen (37.84 KDa) .

**Storage Buffer**

In 1x PBS, pH 7.4

**Storage Instruction**

Store at -20°C or lower. Aliquot to avoid repeated freezing and thawing.

## Applications

- Western Blot (Recombinant protein)

[Protocol Download](#)

- Sandwich ELISA (Recombinant protein)

Detection limit for recombinant GST tagged CRLF2 is approximately 3ng/ml as a capture antibody.

[Protocol Download](#)

- ELISA

## Gene Info — CRLF2

**Entrez GeneID**

[64109](#)

**GeneBank Accession#**

[NM\\_022148](#)

**Protein Accession#**

[NP\\_071431](#)

**Gene Name**

CRLF2

**Gene Alias**

CRL2, CRLF2Y, TSLPR

**Gene Description**

cytokine receptor-like factor 2

**Omim ID**

[300357](#) [400023](#)

**Gene Ontology**

[Hyperlink](#)

**Gene Summary**

Cytokine signals are mediated through specific receptor complexes, the components of which are mostly members of the type I cytokine receptor family. Type I cytokine receptors share conserved structural features in their extracellular domain. Receptor complexes are typically heterodimeric, consisting of alpha chains, which provide ligand specificity, and beta (or gamma) chains, which are required for the formation of high-affinity binding sites and signal transduction.[supplied by OMIM]

**Other Designations**

cytokine receptor CRL2 precursor|thymic stromal lymphopoietin receptor|thymic stromal-derived lymphopoietin receptor

**Pathway**

- [Cytokine-cytokine receptor interaction](#)
- [Jak-STAT signaling pathway](#)

**Disease**

- [Asthma](#)
- [Dermatitis](#)
- [Kaposi Varicelliform Eruption](#)