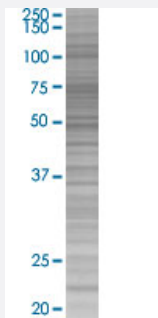


POPDC2 293T Cell Transient Overexpression Lysate(Denatured)

Catalog # H00064091-T02

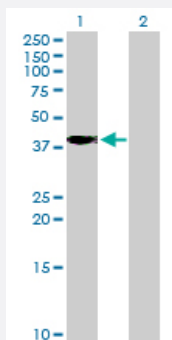
Size 100 uL

Applications



SDS-PAGE Gel

POPDC2 transfected lysate.



Western Blot

Lane 1: POPDC2 transfected lysate (40.40 KDa)

Lane 2: Non-transfected lysate.

Specification

Transfected Cell Line 293T

Plasmid pCMV-POPDC2 full-length

Host Human

Theoretical MW (kDa) 40.4

Quality Control Testing Transient overexpression cell lysate was tested with Anti-POPDC2 antibody ([H00064091-B01P](#)) by Western Blots.
SDS-PAGE Gel
POPDC2 transfected lysate.
Western Blot
Lane 1: POPDC2 transfected lysate (40.40 KDa)
Lane 2: Non-transfected lysate.

Storage Buffer	1X Sample Buffer (50 mM Tris-HCl, 2% SDS, 10% glycerol, 300 mM 2-mercaptoethanol, 0.01% Bromophenol blue)
Storage Instruction	Store at -80°C. Aliquot to avoid repeated freezing and thawing.

Applications

- Western Blot

Gene Info — POPDC2

Entrez GeneID	64091
GeneBank Accession#	NM_022135
Protein Accession#	NP_071418.2
Gene Name	POPDC2
Gene Alias	POP2
Gene Description	popeye domain containing 2
Omim ID	605823
Gene Ontology	Hyperlink
Gene Summary	This gene encodes a member of the POP family of proteins which contain three putative transmembrane domains. This membrane associated protein is predominantly expressed in skeletal and cardiac muscle, and may have an important function in these tissues. [provided by RefSeq]
Other Designations	popeye protein 2