

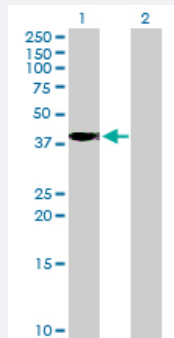
MaxPab®

POPDC2 purified MaxPab mouse polyclonal antibody (B01P)

Catalog # H00064091-B01P

Size 50 ug

Applications



Western Blot (Transfected lysate)

Western Blot analysis of POPDC2 expression in transfected 293T cell line by POPDC2 MaxPab polyclonal antibody.

Lane 1: POPDC2 transfected lysate(40.04 KDa).

Lane 2: Non-transfected lysate.

Specification

Product Description	Mouse polyclonal antibody raised against a full-length human POPDC2 protein.
Immunogen	POPDC2 (NP_071418.2, 1 a.a. ~ 364 a.a) full-length human protein.
Sequence	MSANSSRVGQLLLQGSACIRWKQDVEGAVYHLANCLLLLGMGGSGVYGC FYLFGFLSAGYLCC VLWGWFSACGLDMLWSFLLAVVCLLQLAHLVYRLREDTLPEEFDLLYKTLCLPLQVPLQTYKEV HCCEEQVLT LATEQTYAVEGETPINRLSLLLSGRVRVSQDQGFLHYFPYQFMDSP EWESLQPSE EGVFQVTLTAETSCSYISWPRKSLHLLLT KERYISCLFSALLGYDISEKLYTLNDKLF AKFGLRFDIRL PSLYHVLGPTAADAGPESEKGD EEVCEPAVSP PQATPTSLQQTPPCSTPPATTNFPAPPTRARL SRPD SGILASRIPLQSYSQVISRGQAPLAPHTPEL
Host	Mouse
Reactivity	Human
Quality Control Testing	Antibody reactive against mammalian transfected lysate.
Storage Buffer	In 1x PBS, pH 7.4
Storage Instruction	Store at -20°C or lower. Aliquot to avoid repeated freezing and thawing.

Applications

- Western Blot (Transfected lysate)

Western Blot analysis of POPDC2 expression in transfected 293T cell line by POPDC2 MaxPab polyclonal antibody.

Lane 1: POPDC2 transfected lysate(40.04 KDa).

Lane 2: Non-transfected lysate.

[Protocol Download](#)

Gene Info — POPDC2

Entrez GeneID	64091
---------------	-----------------------

GeneBank Accession#	NM_022135
---------------------	---------------------------

Protein Accession#	NP_071418.2
--------------------	-----------------------------

Gene Name	POPDC2
-----------	--------

Gene Alias	POP2
------------	------

Gene Description	popeye domain containing 2
------------------	----------------------------

Omim ID	605823
---------	------------------------

Gene Ontology	Hyperlink
---------------	---------------------------

Gene Summary	This gene encodes a member of the POP family of proteins which contain three putative transmembrane domains. This membrane associated protein is predominantly expressed in skeletal and cardiac muscle, and may have an important function in these tissues. [provided by RefSeq]
--------------	--

Other Designations	popeye protein 2
--------------------	------------------