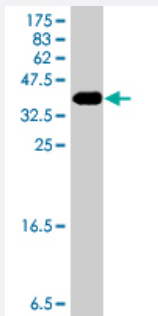


CDH23 polyclonal antibody (A01)

Catalog # H00064072-A01

Size 50 uL

Applications



Western Blot detection against Immunogen (35.57 KDa) .

Specification

Product Description	Mouse polyclonal antibody raised against a partial recombinant CDH23.
Immunogen	CDH23 (NP_071407, 29 a.a. ~ 114 a.a) partial recombinant protein with GST tag.
Sequence	PFFTNIHFFDTYLLISEDTPVGSSVTQLLAQDMDNDPLVFGVSGEEASRFFAVEPDTGVVWLRQP LDRETKSEFTVEFSVSDHQGVI
Host	Mouse
Reactivity	Human
Interspecies Antigen Sequence	Mouse (95); Rat (96)
Quality Control Testing	Antibody Reactive Against Recombinant Protein. Western Blot detection against Immunogen (35.57 KDa) .
Storage Buffer	50 % glycerol
Storage Instruction	Store at -20°C or lower. Aliquot to avoid repeated freezing and thawing.

Applications

- Western Blot (Recombinant protein)

[Protocol Download](#)

- ELISA

Gene Info — CDH23

Entrez GeneID [64072](#)

GeneBank Accession# [NM_022124](#)

Protein Accession# [NP_071407](#)

Gene Name CDH23

Gene Alias DFNB12, DKFZp434P2350, FLJ00233, FLJ36499, KIAA1774, KIAA1812, MGC102761, USH1D

Gene Description cadherin-like 23

Omim ID [601067](#) [601386](#) [605516](#)

Gene Ontology [Hyperlink](#)

Gene Summary This gene is a member of the cadherin superfamily, whose genes encode calcium dependent cell-cell adhesion glycoproteins. The encoded protein is a large, single-pass transmembrane protein composed of an extracellular domain containing 27 repeats that show significant homology to the cadherin ectodomain. Expressed in the neurosensory epithelium, the protein is thought to be involved in stereocilia organization and hair bundle formation. The gene is located in a region containing the human deafness loci DFNB12 and USH1D. Usher syndrome 1D and nonsyndromic autosomal recessive deafness DFNB12 are caused by allelic mutations of this cadherin-like gene. Two alternative splice variants have been identified that encode different isoforms. Additional variants have been observed but their full-length nature has not been determined. [provided by RefSeq]

Other Designations OTTHUMP00000044780|cadherin 23|cadherin related 23|cadherin-23|ptocadherin

Publication Reference

- [Recombinant protein of the first two ectodomains of cadherin 23 from erl mice shows impairment in Ca²⁺-dependent proteolysis protection.](#)

Zhao M, Li P, Xie Y, Liu X, Cheng L, Liu T, Kong L, Wang O, Han F.

Protein Expression and Purification 2018 Feb; 147:55.

Application: WB-Re, E.coli, E.coli competent cells- competent Rosetta (DE3)

- [Cadherin-23 mediates heterotypic cell-cell adhesion between breast cancer epithelial cells and fibroblasts.](#)

Apostolopoulou M, Ligon L.

PLoS One 2012 Mar; 7(3):e33289.

Application: IF, IHC, WB-Ce, WB-Tr, Human, MCF-7 cells, NBFs, Breast

Disease

- [Abnormalities](#)
- [Alzheimer Disease](#)
- [Deafness](#)
- [Genetic Predisposition to Disease](#)
- [Hearing Loss](#)
- [Personality Assessment](#)
- [Retinal Diseases](#)
- [Syndrome](#)
- [Tobacco Use Disorder](#)
- [Usher Syndromes](#)