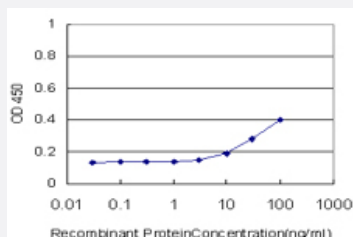


NEUROG2 monoclonal antibody (M02), clone 3B2

Catalog # H00063973-M02

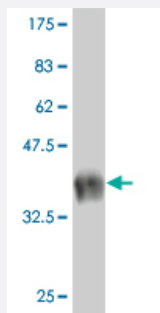
Size 100 ug

Applications



Sandwich ELISA (Recombinant protein)

Detection limit for recombinant GST tagged NEUROG2 is approximately 10ng/ml as a capture antibody.



Western Blot detection against Immunogen (33.98999 KDa) .

Specification

Product Description

Mouse monoclonal antibody raised against a full length recombinant NEUROG2.

Immunogen

NEUROG2 (NP_076924.1, 36 a.a. ~ 112 a.a) full-length recombinant protein with GST tag. MW of the GST tag alone is 26 KDa.

Sequence

SADEEEEEEPGASGGARRQRGAEAGQGARGGVAAGAEGCRPARLLGLVHDCKRRPSRARAV
SRGAKTAETVQRIKKT

Host

Mouse

Reactivity

Human

Isotype

IgG2a Kappa

Quality Control Testing

Antibody Reactive Against Recombinant Protein.
Western Blot detection against Immunogen (33.98999 KDa) .

Storage Buffer

In 1x PBS, pH 7.4

Storage Instruction

Store at -20°C or lower. Aliquot to avoid repeated freezing and thawing.

Applications

- Western Blot (Recombinant protein)

[Protocol Download](#)

- Sandwich ELISA (Recombinant protein)

Detection limit for recombinant GST tagged NEUROG2 is approximately 10ng/ml as a capture antibody.

[Protocol Download](#)

- ELISA

Gene Info — NEUROG2

Entrez GeneID

[63973](#)

GeneBank Accession#

[NM_024019](#)

Protein Accession#

[NP_076924.1](#)

Gene Name

NEUROG2

Gene Alias

Atoh4, MGC46562, Math4A, NGN2, bHLHa8, ngn-2

Gene Description

neurogenin 2

Omim ID

[606624](#)

Gene Ontology

[Hyperlink](#)

Gene Summary

Neurogenin-2 is a member of the neurogenin subfamily of basic helix-loop-helix (bHLH) transcription factor genes that play an important role in neurogenesis from migratory neural crest cells.[supplied by OMIM]

Other Designations

-

Disease

- [Alcoholism](#)
- [Genetic Predisposition to Disease](#)
- [Parkinson Disease](#)