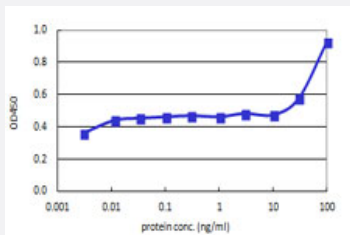


NEUROG2 (Human) Matched Antibody Pair

Catalog # H00063973-AP41 Size 1 Set

Applications



Sandwich ELISA detection sensitivity ranging from 10 ng/ml to 100 ng/ml.

Specification

Product Description	This antibody pair set comes with a matched antibody pair to detect and quantify the protein level of human NEUROG2.
Reactivity	Human
Quality Control Testing	Standard curve using recombinant protein (H00063973-Q02) as an analyte. Sandwich ELISA detection sensitivity ranging from 10 ng/ml to 100 ng/ml.
Supplied Product	Antibody pair set content: 1. Capture antibody: mouse monoclonal anti-NEUROG2, IgG2a Kappa (100 ug) 2. Detection antibody: biotinylated mouse monoclonal anti-NEUROG2, IgG2a Kappa (50 ug) *Reagents are sufficient for at least 3-5 x 96 well plates using recommended protocols.
Storage Instruction	Store reagents of the antibody pair set at -20°C or lower. Please aliquot to avoid repeated freeze thaw cycle. Reagents should be returned to -20°C storage immediately after use.

Applications

- ELISA Pair (Recombinant protein)

[Protocol Download](#)

Gene Info — NEUROG2

Entrez GeneID	63973
Gene Name	NEUROG2
Gene Alias	Atoh4, MGC46562, Math4A, NGN2, bHLHa8, ngn-2
Gene Description	neurogenin 2
Omim ID	606624
Gene Ontology	Hyperlink
Gene Summary	Neurogenin-2 is a member of the neurogenin subfamily of basic helix-loop-helix (bHLH) transcription factor genes that play an important role in neurogenesis from migratory neural crest cells.[supplied by OMIM]
Other Designations	-

Disease

- [Alcoholism](#)
- [Genetic Predisposition to Disease](#)
- [Parkinson Disease](#)