

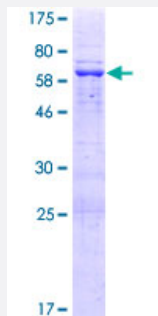
Full-Length

FKBPL (Human) Recombinant Protein (P01)

Catalog # H00063943-P01

Size 25 ug, 10 ug

Applications



Specification

Product Description

Human FKBPL full-length ORF (NP_071393.2, 1 a.a. - 349 a.a.) recombinant protein with GST-tag at N-terminal.

Sequence

METPPVNTIGEKDTSQPQQEWEKNLRENLD SVIQRQQPRDPPTETLELEVSPDPASQILEHTQGA
EKLVAELEGDSHKSHGSTSQMPEALQASDLWYCPDGSFVKKIVIRGHGLDKPKLGSCCRVLALG
FPFGSGPPEGWTELTMGVGPWREETWGELIEKCLES MCQGEEAELQLPGHSGPPVRLTLASFT
QGRDSWELETSEKEALAREERARGTELF RAGNPEGAARCYGRALRLLLTLP PP GPPERTVLHAN
LAACQLLLGQPQLAAQSCDRVLEREPGHLKALYRRGVAQAALGNLEKATADLKKVL AIDPKNRA
AQEELGKVVIQGNQDAGLAQGLRKMFG

Host

Wheat Germ (in vitro)

Theoretical MW (kDa)

64.6

Interspecies Antigen Sequence

Mouse (73); Rat (76)

Preparation Method

[in vitro wheat germ expression system](#)

Purification

Glutathione Sepharose 4 Fast Flow

Quality Control Testing

12.5% SDS-PAGE Stained with Coomassie Blue.

Storage Buffer

50 mM Tris-HCl, 10 mM reduced Glutathione, pH=8.0 in the elution buffer.

Storage Instruction

Store at -80°C. Aliquot to avoid repeated freezing and thawing.

Note

Best use within three months from the date of receipt of this protein.

Applications

- Enzyme-linked Immunoabsorbent Assay
- Western Blot (Recombinant protein)
- Antibody Production
- Protein Array

Gene Info — FKBPL

Entrez GeneID[63943](#)**GeneBank Accession#**[NM_022110.3](#)**Protein Accession#**[NP_071393.2](#)**Gene Name**

FKBPL

Gene Alias

DIR1, NG7, WISP39

Gene Description

FK506 binding protein like

Gene Ontology[Hyperlink](#)**Gene Summary**

The protein encoded by this gene has similarity to the immunophilin protein family, which play a role in immunoregulation and basic cellular processes involving protein folding and trafficking. The encoded protein is thought to have a potential role in the induced radioresistance. Also it appears to have some involvement in the control of the cell cycle. [provided by RefSeq]

Other Designations

FK506-binding protein like|OTTHUMP00000029170|WAF-1/CIP1 stabilizing protein 39

Disease

- [Genetic Predisposition to Disease](#)
- [Infertility](#)

- [Lupus Erythematosus](#)