

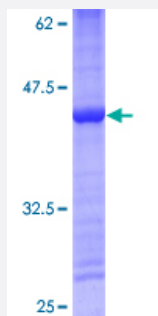
Full-Length

MRPS14 (Human) Recombinant Protein (P01)

Catalog # H00063931-P01

Size 25 ug, 10 ug

Applications



Specification

| | |
|-------------------------------|--|
| Product Description | Human MRPS14 full-length ORF (NP_071383.1, 1 a.a. - 128 a.a.) recombinant protein with GST-tag at N-terminal. |
| Sequence | MAAFMLGSLLRFTKQMPSSASGQVRSHYVDWRMWRDVKRRKMAYEYADERLRINSLRKNTILPKILQDVADEEIAALPRDSCPVRIRNRCVMTSRPRGVKRRWRLSRVFRHLADHGQLSGIQRATW |
| Host | Wheat Germ (in vitro) |
| Theoretical MW (kDa) | 41.5 |
| Interspecies Antigen Sequence | Mouse (86); Rat (85) |
| Preparation Method | in vitro wheat germ expression system |
| Purification | Glutathione Sepharose 4 Fast Flow |
| Quality Control Testing | 12.5% SDS-PAGE Stained with Coomassie Blue. |
| Storage Buffer | 50 mM Tris-HCl, 10 mM reduced Glutathione, pH=8.0 in the elution buffer. |
| Storage Instruction | Store at -80°C. Aliquot to avoid repeated freezing and thawing. |
| Note | Best use within three months from the date of receipt of this protein. |

Applications

- Enzyme-linked Immunoabsorbent Assay
- Western Blot (Recombinant protein)
- Antibody Production
- Protein Array

Gene Info — MRPS14

Entrez GeneID [63931](#)

GeneBank Accession# [NM_022100.1](#)

Protein Accession# [NP_071383.1](#)

Gene Name MRPS14

Gene Alias DJ262D12.2, HSMRPS14, MRP-S14

Gene Description mitochondrial ribosomal protein S14

Gene Ontology [Hyperlink](#)

Gene Summary Mammalian mitochondrial ribosomal proteins are encoded by nuclear genes and help in protein synthesis within the mitochondrion. Mitochondrial ribosomes (mitoribosomes) consist of a small 28S subunit and a large 39S subunit. They have an estimated 75% protein to rRNA composition compared to prokaryotic ribosomes, where this ratio is reversed. Another difference between mammalian mitoribosomes and prokaryotic ribosomes is that the latter contain a 5S rRNA. Among different species, the proteins comprising the mitoribosome differ greatly in sequence, and sometimes in biochemical properties, which prevents easy recognition by sequence homology. This gene encodes a 28S subunit protein that belongs to the ribosomal protein S14P family. [provided by RefSeq]

Other Designations mitochondrial 28S ribosomal protein S14