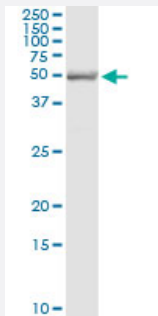


SH2D4A (Human) IP-WB Antibody Pair

Catalog # H00063898-PW1

Size 1 Set

Applications



Immunoprecipitation of SH2D4A transfected lysate using rabbit polyclonal anti-SH2D4A and Protein A Magnetic Bead ([U0007](#)), and immunoblotted with mouse purified polyclonal anti-SH2D4A.

Specification

Product Description	This IP-WB antibody pair set comes with one antibody for immunoprecipitation and another to detect the precipitated protein in western blot.
Reactivity	Human
Interspecies Antigen Sequence	Mouse (72); Rat (73)
Quality Control Testing	Immunoprecipitation-Western Blot (IP-WB) Immunoprecipitation of SH2D4A transfected lysate using rabbit polyclonal anti-SH2D4A and Protein A Magnetic Bead (U0007), and immunoblotted with mouse purified polyclonal anti-SH2D4A.
Supplied Product	Antibody pair set content: 1. Antibody pair for IP: rabbit polyclonal anti-SH2D4A (300 ul) 2. Antibody pair for WB: mouse purified polyclonal anti-SH2D4A (50 ug)
Storage Instruction	Store reagents of the antibody pair set at -20°C or lower. Please aliquot to avoid repeated freeze thaw cycle. Reagents should be returned to -20°C storage immediately after use.

Applications

- Immunoprecipitation-Western Blot

[Protocol Download](#)

Gene Info — SH2D4A

Entrez GeneID	63898
Gene Name	SH2D4A
Gene Alias	FLJ20967, SH2A
Gene Description	SH2 domain containing 4A
Gene Ontology	Hyperlink
Other Designations	-

Disease

- [Tobacco Use Disorder](#)