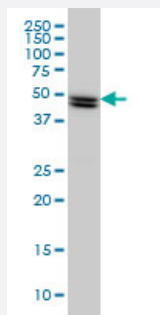


SH2D4A monoclonal antibody (M01), clone 3G8

Catalog # H00063898-M01

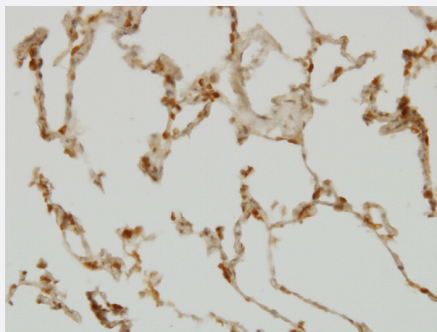
Size 100 ug

Applications



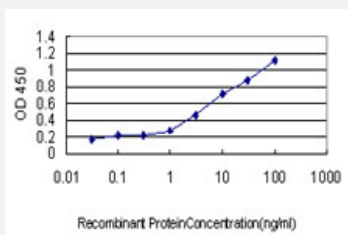
Western Blot (Cell lysate)

SH2D4A monoclonal antibody (M01), clone 3G8 Western Blot analysis of SH2D4A expression in HeLa (Cat # L013V1).



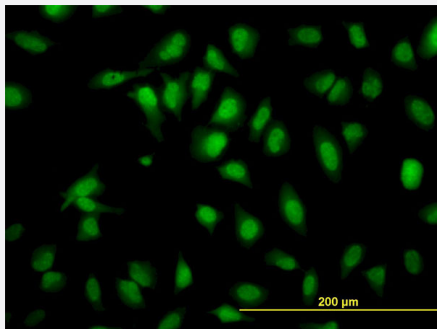
Immunohistochemistry (Formalin/PFA-fixed paraffin-embedded sections)

Immunoperoxidase of monoclonal antibody to SH2D4A on formalin-fixed paraffin-embedded human lung. [antibody concentration 3 ug/ml]



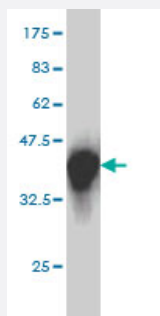
Sandwich ELISA (Recombinant protein)

Detection limit for recombinant GST tagged SH2D4A is approximately 0.03ng/ml as a capture antibody.



Immunofluorescence

Immunofluorescence of monoclonal antibody to SH2D4A on HeLa cell.
[antibody concentration 30 ug/ml]



Western Blot detection against Immunogen (36.63 KDa) .

Specification

Product Description	Mouse monoclonal antibody raised against a partial recombinant SH2D4A.
Immunogen	SH2D4A (AAH14525, 239 a.a. ~ 338 a.a) partial recombinant protein with GST tag. MW of the GST tag alone is 26 KDa.
Sequence	KKANELLLSTGMPGSFLIRVSEIKGYALSYLSEDGCKHFLIDASADAYSFLGVDQLQHATLADLV EYHKEEPITSLGKELLYPGQDQLPDYLELFE
Host	Mouse
Reactivity	Human
Interspecies Antigen Sequence	Mouse (72); Rat (73)
Isotype	IgG2a Kappa
Quality Control Testing	Antibody Reactive Against Recombinant Protein. Western Blot detection against Immunogen (36.63 KDa) .
Storage Buffer	In 1x PBS, pH 7.4
Storage Instruction	Store at -20°C or lower. Aliquot to avoid repeated freezing and thawing.

Applications

- Western Blot (Cell lysate)

SH2D4A monoclonal antibody (M01), clone 3G8 Western Blot analysis of SH2D4A expression in HeLa (Cat # L013V1).

[Protocol Download](#)

- Western Blot (Recombinant protein)

[Protocol Download](#)

- Immunohistochemistry (Formalin/PFA-fixed paraffin-embedded sections)

Immunoperoxidase of monoclonal antibody to SH2D4A on formalin-fixed paraffin-embedded human lung. [antibody concentration 3 ug/ml]

[Protocol Download](#)

- Sandwich ELISA (Recombinant protein)

Detection limit for recombinant GST tagged SH2D4A is approximately 0.03ng/ml as a capture antibody.

[Protocol Download](#)

- ELISA

- Immunofluorescence

Immunofluorescence of monoclonal antibody to SH2D4A on HeLa cell. [antibody concentration 30 ug/ml]

Gene Info — SH2D4A

Entrez GeneID	63898
---------------	-----------------------

GeneBank Accession#	BC014525
---------------------	--------------------------

Protein Accession#	AAH14525
--------------------	--------------------------

Gene Name	SH2D4A
-----------	--------

Gene Alias	FLJ20967, SH2A
------------	----------------

Gene Description	SH2 domain containing 4A
------------------	--------------------------

Gene Ontology	Hyperlink
---------------	---------------------------

Other Designations

-

Disease

- [Tobacco Use Disorder](#)