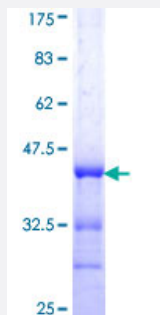


FKBP10 (Human) Recombinant Protein (Q01)

Catalog # H00060681-Q01

Size 10 ug, 25 ug

Applications



Specification

Product Description	Human FKBP10 partial ORF (NP_068758, 377 a.a. - 470 a.a.) recombinant protein with GST-tag at N-terminal.
Sequence	ADVVEIRTLSRPSETCNETTKLGDFVRYHYNCSLLDGTQLFTSHDYGAPQEATLGANKVIEGLDTG LQGMCVGERRQLVPPHLAHGESGARGV
Host	Wheat Germ (in vitro)
Theoretical MW (kDa)	36.08
Interspecies Antigen Sequence	Mouse (89); Rat (88)
Preparation Method	in vitro wheat germ expression system
Purification	Glutathione Sepharose 4 Fast Flow
Quality Control Testing	12.5% SDS-PAGE Stained with Coomassie Blue.
Storage Buffer	50 mM Tris-HCl, 10 mM reduced Glutathione, pH=8.0 in the elution buffer.
Storage Instruction	Store at -80°C. Aliquot to avoid repeated freezing and thawing.
Note	Best use within three months from the date of receipt of this protein.

Applications

- Enzyme-linked Immunoabsorbent Assay
- Western Blot (Recombinant protein)
- Antibody Production
- Protein Array

Gene Info — FKBP10

Entrez GeneID [60681](#)

GeneBank Accession# [NM_021939](#)

Protein Accession# [NP_068758](#)

Gene Name FKBP10

Gene Alias FKBP6, FKBP65, FLJ20683, FLJ22041, FLJ23833, hFKBP65

Gene Description FK506 binding protein 10, 65 kDa

Omim ID [607063](#)

Gene Ontology [Hyperlink](#)

Gene Summary The protein encoded by this gene belongs to the FKBP-type peptidyl-prolyl cis/trans isomerase family. It is located in endoplasmic reticulum and acts as molecular chaperones. An alternatively spliced variant encoding different isoform has been found, but the biological validity of the variant is not determined. [provided by RefSeq]

Other Designations -