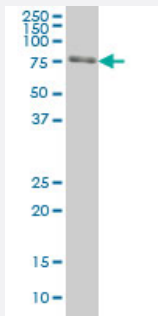


FKBP10 monoclonal antibody (M01A), clone 1C6

Catalog # H00060681-M01A

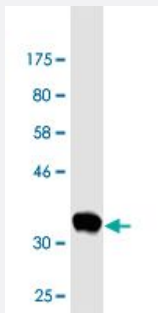
Size 200 uL

Applications



Western Blot (Cell lysate)

FKBP10 monoclonal antibody (M01A), clone 1C6 Western Blot analysis of FKBP10 expression in HeLa (Cat # L013V1).



Western Blot detection against Immunogen (36.08 KDa) .

Specification

Product Description	Mouse monoclonal antibody raised against a partial recombinant FKBP10.
Immunogen	FKBP10 (NP_068758, 377 a.a. ~ 470 a.a) partial recombinant protein with GST tag. MW of the GST tag alone is 26 KDa.
Sequence	ADVVEIRTLSRPSETCNETTKLGDFVRYHYNCSSLDDGTQLFTSHDYGAPQEATLGANKVIEGLDTG LQGMCVGERRQLVPPHLAHGESGARGV
Host	Mouse
Reactivity	Human

Interspecies Antigen Sequence	Mouse (89); Rat (88)
Isotype	IgG2a Kappa
Quality Control Testing	Antibody Reactive Against Recombinant Protein. Western Blot detection against Immunogen (36.08 KDa) .
Storage Buffer	In ascites fluid
Storage Instruction	Store at -20°C or lower. Aliquot to avoid repeated freezing and thawing.

Applications

- Western Blot (Cell lysate)

FKBP10 monoclonal antibody (M01A), clone 1C6 Western Blot analysis of FKBP10 expression in HeLa (Cat # L013V1).

[Protocol Download](#)

- Western Blot (Recombinant protein)

[Protocol Download](#)

- ELISA

Gene Info — FKBP10

Entrez GeneID	60681
GeneBank Accession#	NM_021939
Protein Accession#	NP_068758
Gene Name	FKBP10
Gene Alias	FKBP6, FKBP65, FLJ20683, FLJ22041, FLJ23833, hFKBP65
Gene Description	FK506 binding protein 10, 65 kDa
Omim ID	607063
Gene Ontology	Hyperlink

Gene Summary

The protein encoded by this gene belongs to the FKBP-type peptidyl-prolyl cis/trans isomerase family. It is located in endoplasmic reticulum and acts as molecular chaperones. An alternatively spliced variant encoding different isoform has been found, but the biological validity of the variant is not determined. [provided by RefSeq]

Other Designations

-