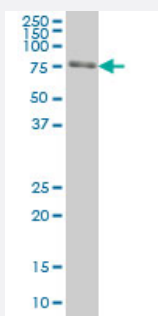


FKBP10 monoclonal antibody (M01), clone 1C6

Catalog # H00060681-M01

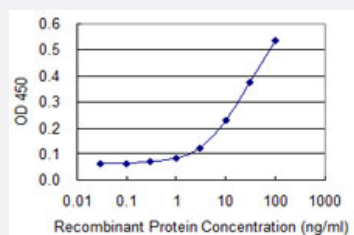
Size 50 ug

Applications



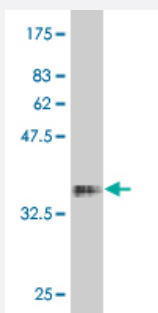
Western Blot (Cell lysate)

FKBP10 monoclonal antibody (M01), clone 1C6 Western Blot analysis of FKBP10 expression in HeLa (Cat # L013V1).



Sandwich ELISA (Recombinant protein)

Detection limit for recombinant GST tagged FKBP10 is 1 ng/ml as a capture antibody.



Western Blot detection against Immunogen (36.08 KDa) .

Specification

Product Description

Mouse monoclonal antibody raised against a partial recombinant FKBP10.

| | |
|--------------------------------------|---|
| Immunogen | FKBP10 (NP_068758, 377 a.a. ~ 470 a.a) partial recombinant protein with GST tag. MW of the GST tag alone is 26 KDa. |
| Sequence | ADVVEIRTLSRPSETCNETTKLGDFVRYHYNCSSLDDGTQLFTSHDYGAPQEATLGANKVIEGLDTG LQGMCVGERRQLVPPHLAHGESGARGV |
| Host | Mouse |
| Reactivity | Human |
| Interspecies Antigen Sequence | Mouse (89); Rat (88) |
| Isotype | IgG2a Kappa |
| Quality Control Testing | Antibody Reactive Against Recombinant Protein. Western Blot detection against Immunogen (36.08 KDa) . |
| Storage Buffer | In 1x PBS, pH 7.4 |
| Storage Instruction | Store at -20°C or lower. Aliquot to avoid repeated freezing and thawing. |

Applications

- Western Blot (Cell lysate)

FKBP10 monoclonal antibody (M01), clone 1C6 Western Blot analysis of FKBP10 expression in HeLa (Cat # L013V1).

[Protocol Download](#)

- Western Blot (Recombinant protein)

[Protocol Download](#)

- Sandwich ELISA (Recombinant protein)

Detection limit for recombinant GST tagged FKBP10 is 1 ng/ml as a capture antibody.

[Protocol Download](#)

- ELISA

Gene Info — FKBP10

Entrez GeneID [60681](#)

| | |
|---------------------|--|
| GeneBank Accession# | NM_021939 |
| Protein Accession# | NP_068758 |
| Gene Name | FKBP10 |
| Gene Alias | FKBP6, FKBP65, FLJ20683, FLJ22041, FLJ23833, hFKBP65 |
| Gene Description | FK506 binding protein 10, 65 kDa |
| Omim ID | 607063 |
| Gene Ontology | Hyperlink |
| Gene Summary | <p>The protein encoded by this gene belongs to the FKBP-type peptidyl-prolyl cis/trans isomerase family. It is located in endoplasmic reticulum and acts as molecular chaperones. An alternatively spliced variant encoding different isoform has been found, but the biological validity of the variant is not determined. [provided by RefSeq]</p> |
| Other Designations | - |