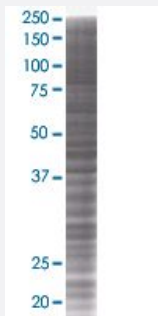


BRUNOL6 293T Cell Transient Overexpression Lysate(Denatured)

Catalog # H00060677-T01

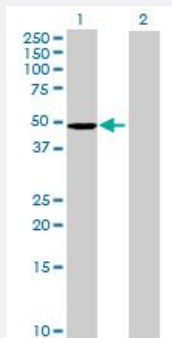
Size 100 uL

Applications



SDS-PAGE Gel

BRUNOL6 transfected lysate.



Western Blot

Lane 1: BRUNOL6 transfected lysate (50.5 KDa)

Lane 2: Non-transfected lysate.

Specification

Transfected Cell Line 293T

Plasmid pCMV-BRUNOL6 full-length

Host Human

Theoretical MW (kDa) 50.5

Quality Control Testing Transient overexpression cell lysate was tested with Anti-BRUNOL6 antibody ([H00060677-B01](#)) by Western Blots.
SDS-PAGE Gel
BRUNOL6 transfected lysate.
Western Blot
Lane 1: BRUNOL6 transfected lysate (50.5 KDa)
Lane 2: Non-transfected lysate.

Storage Buffer

1X Sample Buffer (50 mM Tris-HCl, 2% SDS, 10% glycerol, 300 mM 2-mercaptoethanol, 0.01% Bromophenol blue)

Storage Instruction

Store at -80°C. Aliquot to avoid repeated freezing and thawing.

Applications

- Western Blot

Gene Info — BRUNOL6

Entrez GeneID[60677](#)**GeneBank Accession#**[BC030835](#)**Protein Accession#**[AAH30835](#)**Gene Name**

BRUNOL6

Gene Alias

CELF6

Gene Description

bruno-like 6, RNA binding protein (Drosophila)

Gene Ontology[Hyperlink](#)**Gene Summary**

Members of the CELF/BRUNOL protein family contain two N-terminal RNA recognition motif (RRM) domains, one C-terminal RRM domain, and a divergent segment of 160-230 aa between the second and third RRM domains. Members of this protein family regulate pre-mRNA alternative splicing and may also be involved in mRNA editing, and translation. [provided by RefSeq]

Other Designations

Bruno-like 6, RNA binding protein|CUG-BP and ETR-3 like factor 6|RNA-binding protein BRUNOL-6|bruno-like 6, RNA binding protein