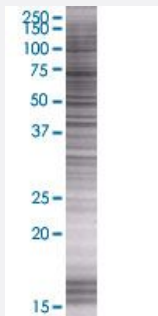


MRPS35 293T Cell Transient Overexpression Lysate(Denatured)

Catalog # H00060488-T02

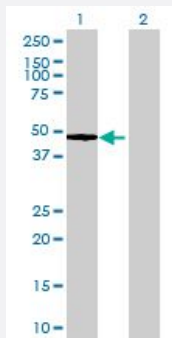
Size 100 uL

Applications



SDS-PAGE Gel

MRPS35 transfected lysate.



Western Blot

Lane 1: MRPS35 transfected lysate (36.8 KDa)

Lane 2: Non-transfected lysate.

Specification

Transfected Cell Line	293T
Plasmid	pCMV-MRPS35 full-length
Host	Human
Theoretical MW (kDa)	36.8
Interspecies Antigen Sequence	Mouse (76); Rat (77)

Quality Control Testing

Transient overexpression cell lysate was tested with Anti-MRPS35 antibody ([H00060488-B02](#)) by Western Blots.
SDS-PAGE Gel
MRPS35 transfected lysate.
Western Blot
Lane 1: MRPS35 transfected lysate (36.8 KDa)
Lane 2: Non-transfected lysate.

Storage Buffer

1X Sample Buffer (50 mM Tris-HCl, 2% SDS, 10% glycerol, 300 mM 2-mercaptoethanol, 0.01% Bromophenol blue)

Storage Instruction

Store at -80°C. Aliquot to avoid repeated freezing and thawing.

Applications

- Western Blot

Gene Info — MRPS35

Entrez GeneID

[60488](#)

GeneBank Accession#

[NM_021821](#)

Protein Accession#

[NP_068593](#)

Gene Name

MRPS35

Gene Alias

DKFZp762P093, HDCMD11P, MDS023, MGC104278, MRP-S28, MRPS28

Gene Description

mitochondrial ribosomal protein S35

Gene Ontology

[Hyperlink](#)

Gene Summary

Mammalian mitochondrial ribosomal proteins are encoded by nuclear genes and help in protein synthesis within the mitochondrion. Mitochondrial ribosomes (mitoribosomes) consist of a small 28S subunit and a large 39S subunit. They have an estimated 75% protein to rRNA composition compared to prokaryotic ribosomes, where this ratio is reversed. Another difference between mammalian mitoribosomes and prokaryotic ribosomes is that the latter contain a 5S rRNA. Among different species, the proteins comprising the mitoribosome differ greatly in sequence, and sometimes in biochemical properties, which prevents easy recognition by sequence homology. This gene encodes a 28S subunit protein that has had confusing nomenclature in the literature. Pseudogenes corresponding to this gene are found on chromosomes 3p, 5q, and 10q. [provided by RefSeq]

Other Designations

mitochondrial ribosomal protein S28