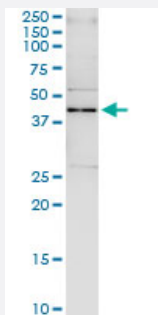


SAV1 (Human) IP-WB Antibody Pair

Catalog # H00060485-PW3

Size 1 Set

Applications



Immunoprecipitation of SAV1 transfected lysate using rabbit polyclonal anti-SAV1 and Protein A Magnetic Bead ([U0007](#)), and immunoblotted with mouse purified polyclonal anti-SAV1.

Specification

Product Description	This IP-WB antibody pair set comes with one antibody for immunoprecipitation and another to detect the precipitated protein in western blot.
Reactivity	Human
Interspecies Antigen Sequence	Mouse (94); Rat (94)
Quality Control Testing	Immunoprecipitation-Western Blot (IP-WB) Immunoprecipitation of SAV1 transfected lysate using rabbit polyclonal anti-SAV1 and Protein A Magnetic Bead (U0007), and immunoblotted with mouse purified polyclonal anti-SAV1.
Supplied Product	Antibody pair set content: 1. Antibody pair for IP: rabbit polyclonal anti-SAV1 (300 ul) 2. Antibody pair for WB: mouse purified polyclonal anti-SAV1 (50 ug)
Storage Instruction	Store reagents of the antibody pair set at -20°C or lower. Please aliquot to avoid repeated freeze thaw cycle. Reagents should be returned to -20°C storage immediately after use.

Applications

- Immunoprecipitation-Western Blot

[Protocol Download](#)

Gene Info — SAV1

Entrez GeneID [60485](#)

Gene Name SAV1

Gene Alias SAV, WW45, WWP4

Gene Description salvador homolog 1 (Drosophila)

Omim ID [607203](#)

Gene Ontology [Hyperlink](#)

Gene Summary WW domain-containing proteins are found in all eukaryotes and play an important role in the regulation of a wide variety of cellular functions such as protein degradation, transcription, and RNA splicing. This gene encodes a protein which contains 2 WW domains and a coiled-coil region. It is ubiquitously expressed in adult tissues. The encoded protein is 94% identical to the mouse protein at the amino acid level. [provided by RefSeq]

Other Designations 1700040G09Rik|WW domain-containing|WW45 protein