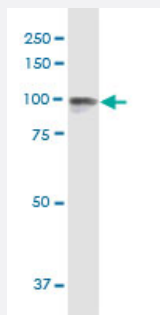


CDH26 monoclonal antibody (M04), clone 6C10

Catalog # H00060437-M04

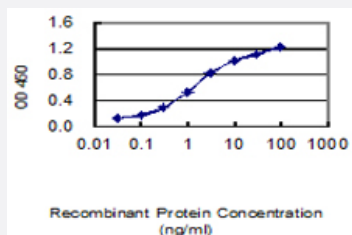
Size 100 ug

Applications



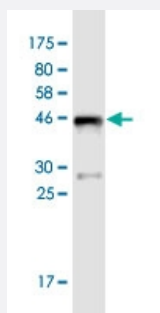
Western Blot (Cell lysate)

CDH26 monoclonal antibody (M04), clone 6C10. Western Blot analysis of CDH26 expression in HeLa.



Sandwich ELISA (Recombinant protein)

Detection limit for recombinant GST tagged CDH26 is 0.03 ng/ml as a capture antibody.



Western Blot detection against Immunogen (44.1 KDa) .

Specification

Product Description

Mouse monoclonal antibody raised against a full-length recombinant CDH26.

Immunogen	CDH26 (NP_068582.2, 1 a.a. ~ 165 a.a) full-length recombinant protein with GST tag. MW of the GST tag alone is 26 KDa.
Sequence	MKPLIWTWSDVEGQRPALLICTAAAGPTQGVKDLEEVPPSAASQSAQARCALGSWGYGKPFEP RSVKNIHSTPAYPDATMHRQLLAPVEGRMAETLNQKLHVANVLEDDPGYLPVYSEEGECGGAP SLSSLASLEQELQPDLLDSLGSKATPFEEIYSESGVPS
Host	Mouse
Reactivity	Human
Interspecies Antigen Sequence	Mouse (44); Rat (47)
Isotype	IgG2b Kappa
Quality Control Testing	Antibody Reactive Against Recombinant Protein. Western Blot detection against Immunogen (44.1 KDa) .
Storage Buffer	In 1x PBS, pH 7.4
Storage Instruction	Store at -20°C or lower. Aliquot to avoid repeated freezing and thawing.

Applications

- Western Blot (Cell lysate)

CDH26 monoclonal antibody (M04), clone 6C10. Western Blot analysis of CDH26 expression in HeLa.

[Protocol Download](#)

- Western Blot (Recombinant protein)

[Protocol Download](#)

- Sandwich ELISA (Recombinant protein)

Detection limit for recombinant GST tagged CDH26 is 0.03 ng/ml as a capture antibody.

[Protocol Download](#)

- ELISA

Gene Info — CDH26

Entrez GeneID

[60437](#)

GeneBank Accession#	NM_021810.3
Protein Accession#	NP_068582.2
Gene Name	CDH26
Gene Alias	VR20
Gene Description	cadherin-like 26
Gene Ontology	Hyperlink
Gene Summary	<p>Cadherins are a family of adhesion molecules that mediate Ca²⁺-dependent cell-cell adhesion in all solid tissues and modulate a wide variety of processes, including cell polarization and migration. Cadherin domains occur as repeats in the extracellular region and are thought to contribute to the sorting of heterogeneous cell types and the maintenance of orderly structures such as epithelium. This gene encodes a cadherin domain-containing protein whose specific function has not yet been determined. Alternative splicing occurs at this locus and two transcript variants, encoding distinct proteins, have been identified. [provided by RefSeq]</p>
Other Designations	cadherin-like protein VR20

Disease

- [Asthma](#)
- [Genetic Predisposition to Disease](#)
- [Hypersensitivity](#)
- [Tobacco Use Disorder](#)