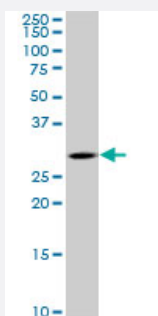


TGIF2 monoclonal antibody (M03), clone 5G1

Catalog # H00060436-M03

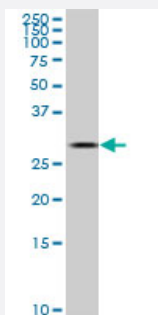
Size 100 ug

Applications



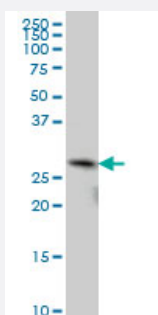
Western Blot (Cell lysate)

TGIF2 monoclonal antibody (M03), clone 5G1. Western Blot analysis of TGIF2 expression in SJCRH30 (Cat # L027V1).



Western Blot (Cell lysate)

TGIF2 monoclonal antibody (M03), clone 5G1. Western Blot analysis of TGIF2 expression in HeLa S3 NE (Cat # L013V3).

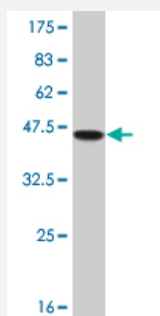
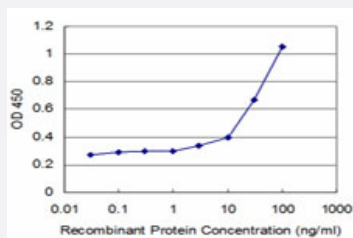


Western Blot (Cell lysate)

TGIF2 monoclonal antibody (M03), clone 5G1 Western Blot analysis of TGIF2 expression in IMR-32 (Cat # L008V1).

Sandwich ELISA (Recombinant protein)

Detection limit for recombinant GST tagged TGIF2 is approximately 3ng/ml as a capture antibody.



Western Blot detection against Immunogen (37.4 KDa) .

Specification

Product Description	Mouse monoclonal antibody raised against a partial recombinant TGIF2.
Immunogen	TGIF2 (NP_068581, 131 a.a. ~ 236 a.a) partial recombinant protein with GST tag. MW of the GST tag alone is 26 KDa.
Sequence	SMPLHSGQGGEKPAAPFPRGELESPKPLVTPGSTLTLLTRAEAGSPTGGLFNTPPPTPPEQDKED FSSFQLLVEVALQRAAEMELQKQQDPSLPLLHTPIPLVSENP
Host	Mouse
Reactivity	Human
Interspecies Antigen Sequence	Mouse (94); Rat (95)
Isotype	IgG2a Kappa
Quality Control Testing	Antibody Reactive Against Recombinant Protein. Western Blot detection against Immunogen (37.4 KDa) .
Storage Buffer	In 1x PBS, pH 7.4
Storage Instruction	Store at -20°C or lower. Aliquot to avoid repeated freezing and thawing.

Applications

- Western Blot (Cell lysate)

TGIF2 monoclonal antibody (M03), clone 5G1. Western Blot analysis of TGIF2 expression in SJCRH30 (Cat # L027V1).

[Protocol Download](#)

- Western Blot (Cell lysate)

TGIF2 monoclonal antibody (M03), clone 5G1. Western Blot analysis of TGIF2 expression in Hela S3 NE (Cat # L013V3).

[Protocol Download](#)

- Western Blot (Cell lysate)

TGIF2 monoclonal antibody (M03), clone 5G1 Western Blot analysis of TGIF2 expression in IMR-32 (Cat # L008V1).

[Protocol Download](#)

- Western Blot (Recombinant protein)

[Protocol Download](#)

- Sandwich ELISA (Recombinant protein)

Detection limit for recombinant GST tagged TGIF2 is approximately 3ng/ml as a capture antibody.

[Protocol Download](#)

- ELISA

Gene Info — TGIF2

Entrez GeneID	60436
---------------	-----------------------

GeneBank Accession#	NM_021809
---------------------	---------------------------

Protein Accession#	NP_068581
--------------------	---------------------------

Gene Name	TGIF2
-----------	-------

Gene Alias	-
------------	---

Gene Description	TGFB-induced factor homeobox 2
------------------	--------------------------------

Omim ID	607294
---------	------------------------

Gene Ontology[Hyperlink](#)**Gene Summary**

The protein encoded by this gene is a DNA-binding homeobox protein and a transcriptional repressor. The encoded protein appears to repress transcription by recruiting histone deacetylases to TGF beta-responsive genes. This gene is amplified and overexpressed in some ovarian cancers, and mutations in this gene can cause holoprosencephaly. [provided by RefSeq]

Other Designations

5'-TG-3' interacting factor 2|OTTHUMP00000030848|OTTHUMP00000030849|TGF(beta)-induced transcription factor 2|TGFB-induced factor 2 (TALE family homeobox)|homeobox protein TGIF2|transcription growth factor-beta-induced factor 2