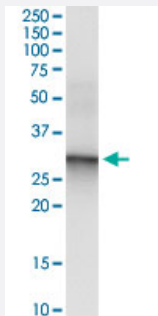


CACNG6 (Human) IP-WB Antibody Pair

Catalog # H00059285-PW2

Size 1 Set

Applications



Immunoprecipitation of CACNG6 transfected lysate using rabbit polyclonal anti-CACNG6 and Protein A Magnetic Bead ([U0007](#)), and immunoblotted with mouse purified polyclonal anti-CACNG6.

Specification

Product Description	This IP-WB antibody pair set comes with one antibody for immunoprecipitation and another to detect the precipitated protein in western blot.
Reactivity	Human
Interspecies Antigen Sequence	Mouse (86); Rat (87)
Quality Control Testing	Immunoprecipitation-Western Blot (IP-WB) Immunoprecipitation of CACNG6 transfected lysate using rabbit polyclonal anti-CACNG6 and Protein A Magnetic Bead (U0007), and immunoblotted with mouse purified polyclonal anti-CACNG6.
Supplied Product	Antibody pair set content: 1. Antibody pair for IP: rabbit polyclonal anti-CACNG6 (300 ul) 2. Antibody pair for WB: mouse purified polyclonal anti-CACNG6 (50 ug)
Storage Instruction	Store reagents of the antibody pair set at -20°C or lower. Please aliquot to avoid repeated freeze thaw cycle. Reagents should be returned to -20°C storage immediately after use.

Applications

- Immunoprecipitation-Western Blot

[Protocol Download](#)

Gene Info — CACNG6

Entrez GeneID [59285](#)

Gene Name CACNG6

Gene Alias -

Gene Description calcium channel, voltage-dependent, gamma subunit 6

Omim ID [606898](#)

Gene Ontology [Hyperlink](#)

Gene Summary L-type calcium channels are composed of five subunits. The protein encoded by this gene represents one of these subunits, gamma, and is one of several gamma subunit proteins. It is an integral membrane protein that is thought to stabilize the calcium channel in an inactive (closed) state. This gene is a member of the neuronal calcium channel gamma subunit gene subfamily of the PMP-22/EMP/MP20 family and is located in a cluster with two similar gamma subunit-encoding genes. Three transcript variants encoding different isoforms have been found for this gene. [provided by RefSeq]

Other Designations neuronal voltage-gated calcium channel gamma-6 subunit|voltage-dependent calcium channel gamma-6 subunit

Pathway

- [Arrhythmogenic right ventricular cardiomyopathy \(ARVC\)](#)
- [Cardiac muscle contraction](#)
- [Hypertrophic cardiomyopathy \(HCM\)](#)
- [MAPK signaling pathway](#)

Disease

- [Asthma](#)