

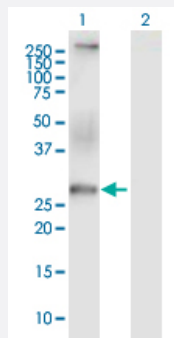
MaxPab®

CACNG6 purified MaxPab mouse polyclonal antibody (B01P)

Catalog # H00059285-B01P

Size 50 ug

Applications



Western Blot (Transfected lysate)

Western Blot analysis of CACNG6 expression in transfected 293T cell line ([H00059285-T01](#)) by CACNG6 MaxPab polyclonal antibody.

Lane 1: CACNG6 transfected lysate(28.6 KDa).

Lane 2: Non-transfected lysate.

Specification

Product Description	Mouse polyclonal antibody raised against a full-length human CACNG6 protein.
Immunogen	CACNG6 (NP_665813.1, 1 a.a. ~ 260 a.a) full-length human protein.
Sequence	MMWSNFFLQEENRRRGAAGRRRAHGQGRSGLTPEREGKVKLALLLAAVGATLAVLSVGTEFWV ELNTYKANGSAVCEAAHLGLWKACTKRLWQADVPVDRDTCGPAELPGEANCTYKFFFTGENA RIFQRTTKKEVNLA AVI AVLGLAVMALGCLCIIMVLSKGAEFLLRVGAVCFGLSGLLLVSLEVFR HSVRALLQRVSPPEPPAPRLTYEYSWSLGC GVGAGLILLGAGCFLLLTPSWPWGSLCPKRGH RAT
Host	Mouse
Reactivity	Human
Interspecies Antigen Sequence	Mouse (86); Rat (87)
Quality Control Testing	Antibody reactive against mammalian transfected lysate.
Storage Buffer	In 1x PBS, pH 7.4
Storage Instruction	Store at -20°C or lower. Aliquot to avoid repeated freezing and thawing.

Applications

- Western Blot (Transfected lysate)

Western Blot analysis of CACNG6 expression in transfected 293T cell line ([H00059285-T01](#)) by CACNG6 MaxPab polyclonal antibody.

Lane 1: CACNG6 transfected lysate(28.6 KDa).

Lane 2: Non-transfected lysate.

[Protocol Download](#)

Gene Info — CACNG6

Entrez GeneID [59285](#)

GeneBank Accession# [NM_145814](#)

Protein Accession# [NP_665813.1](#)

Gene Name CACNG6

Gene Alias -

Gene Description calcium channel, voltage-dependent, gamma subunit 6

Omim ID [606898](#)

Gene Ontology [Hyperlink](#)

Gene Summary L-type calcium channels are composed of five subunits. The protein encoded by this gene represents one of these subunits, gamma, and is one of several gamma subunit proteins. It is an integral membrane protein that is thought to stabilize the calcium channel in an inactive (closed) state. This gene is a member of the neuronal calcium channel gamma subunit gene subfamily of the PMP-22/EMP/MP20 family and is located in a cluster with two similar gamma subunit-encoding genes. Three transcript variants encoding different isoforms have been found for this gene. [provided by RefSeq]

Other Designations neuronal voltage-gated calcium channel gamma-6 subunit|voltage-dependent calcium channel gamma-6 subunit

Pathway

- [Arrhythmogenic right ventricular cardiomyopathy \(ARVC\)](#)

- [Cardiac muscle contraction](#)
- [Hypertrophic cardiomyopathy \(HCM\)](#)
- [MAPK signaling pathway](#)

Disease

- [Asthma](#)