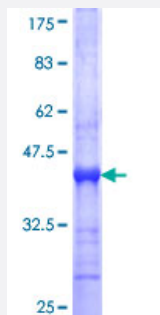


# MPP4 (Human) Recombinant Protein (Q01)

Catalog # H00058538-Q01

Size 25 ug, 10 ug

## Applications



## Specification

<b>Product Description</b>	Human MPP4 partial ORF ( NP_149055, 1 a.a. - 109 a.a.) recombinant protein with GST-tag at N-terminal.
<b>Sequence</b>	MIQSDKGADPPDKKDMKLSTATNPQNGLSQILRLVLQELSLFYSRDVNGVCLLYDLLHSPWLQAL LKIYDCLQEFKEKKLVPAATPHAQVLSYEVVELLRETPTSPEIQE
<b>Host</b>	Wheat Germ (in vitro)
<b>Theoretical MW (kDa)</b>	37.73
<b>Interspecies Antigen Sequence</b>	Mouse (71); Rat (76)
<b>Preparation Method</b>	<a href="#">in vitro wheat germ expression system</a>
<b>Purification</b>	Glutathione Sepharose 4 Fast Flow
<b>Quality Control Testing</b>	12.5% SDS-PAGE Stained with Coomassie Blue.
<b>Storage Buffer</b>	50 mM Tris-HCl, 10 mM reduced Glutathione, pH=8.0 in the elution buffer.
<b>Storage Instruction</b>	Store at -80°C. Aliquot to avoid repeated freezing and thawing.
<b>Note</b>	Best use within three months from the date of receipt of this protein.

## Applications

- Enzyme-linked Immunoabsorbent Assay
- Western Blot (Recombinant protein)
- Antibody Production
- Protein Array

## Gene Info — MPP4

Entrez GeneID [58538](#)

GeneBank Accession# [NM\\_033066](#)

Protein Accession# [NP\\_149055](#)

Gene Name MPP4

Gene Alias ALS2CR5, DLG6

Gene Description membrane protein, palmitoylated 4 (MAGUK p55 subfamily member 4)

Omim ID [606575](#)

Gene Ontology [Hyperlink](#)

**Gene Summary** This gene encodes a member of the membrane-associated guanylate kinase (MAGUK) protein family, with an N-terminal PDZ domain, a central src homology 3 region (SH3), and a C-terminal guanylate kinase-like (GUK) domain. The protein is localized to the outer limiting membrane in the retina, and is thought to function in photoreceptor polarity and the organization of specialized intercellular junctions. Alternatively spliced transcript variants have been described, but their biological validity has not been determined. [provided by RefSeq]

**Other Designations** MAGUK p55 subfamily member 4|amyotrophic lateral sclerosis 2 chromosomal region candidate gene 5 protein|discs, large homolog 6|membrane protein, palmitoylated 4

## Disease

- [Tobacco Use Disorder](#)