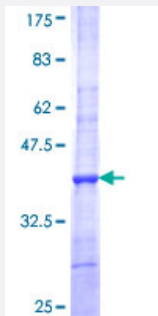


# DNASE2B (Human) Recombinant Protein (Q01)

Catalog # H00058511-Q01

Size 25 ug, 10 ug

## Applications



## Specification

<b>Product Description</b>	Human DNASE2B partial ORF ( NP_067056, 258 a.a. - 357 a.a.) recombinant protein with GST-tag at N-terminal.
<b>Sequence</b>	HLLTETWQRKRQELPSNCSLPYHVYNIKAIKLSRHSYFSSYQDHAKWCISQKGTKNRWTCIGDLNR SPHQAFRSGGFICTQNWQIYQAFQGLVLYESCK
<b>Host</b>	Wheat Germ (in vitro)
<b>Theoretical MW (kDa)</b>	36.74
<b>Interspecies Antigen Sequence</b>	Mouse (66); Rat (67)
<b>Preparation Method</b>	<a href="#">in vitro wheat germ expression system</a>
<b>Purification</b>	Glutathione Sepharose 4 Fast Flow
<b>Quality Control Testing</b>	12.5% SDS-PAGE Stained with Coomassie Blue.
<b>Storage Buffer</b>	50 mM Tris-HCl, 10 mM reduced Glutathione, pH=8.0 in the elution buffer.
<b>Storage Instruction</b>	Store at -80°C. Aliquot to avoid repeated freezing and thawing.
<b>Note</b>	Best use within three months from the date of receipt of this protein.

## Applications

- Enzyme-linked Immunoabsorbent Assay
- Western Blot (Recombinant protein)
- Antibody Production
- Protein Array

## Gene Info — DNASE2B

Entrez GeneID [58511](#)

GeneBank Accession# [NM\\_021233](#)

Protein Accession# [NP\\_067056](#)

Gene Name DNASE2B

Gene Alias DLAD

Gene Description deoxyribonuclease II beta

Omim ID [608057](#)

Gene Ontology [Hyperlink](#)

**Gene Summary** The protein encoded by this gene shares considerable sequence similarity to, and is structurally related to DNase II. The latter is a well characterized endonuclease that catalyzes DNA hydrolysis in the absence of divalent cations at acidic pH. Unlike DNase II which is ubiquitously expressed, expression of this gene product is restricted to the salivary gland and lungs. The gene has been localized to chromosome 1p22.3 adjacent (and in opposite orientation) to the uricase pseudogene. Two transcript variants encoding different isoforms have been described for this gene. [provided by RefSeq]

**Other Designations** DNase II-like acid DNase|OTTHUMP00000011481|endonuclease DLAD|lysosomal DNase II

## Pathway

- [Lysosome](#)