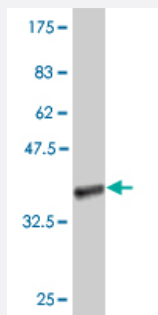


DNASE2B polyclonal antibody (A01)

Catalog # H00058511-A01

Size 50 uL

Applications



Western Blot detection against Immunogen (37.11 kDa) .

Specification

Product Description	Mouse polyclonal antibody raised against a partial recombinant DNASE2B.
Immunogen	DNASE2B (NP_067056, 258 a.a. ~ 357 a.a) partial recombinant protein with GST tag.
Sequence	HLLTETWQRKRQELPSNCSLPYHVYNIKAIKLSRHSYFSSYQDHAKWCISQKGTKNRWTCIGDLNR SPHQAFRSGGFICTQNWQIQAFQGLVLYYESCK
Host	Mouse
Reactivity	Human
Interspecies Antigen Sequence	Mouse (66); Rat (67)
Quality Control Testing	Antibody Reactive Against Recombinant Protein. Western Blot detection against Immunogen (37.11 kDa) .
Storage Buffer	50 % glycerol
Storage Instruction	Store at -20°C or lower. Aliquot to avoid repeated freezing and thawing.

Applications

- Western Blot (Recombinant protein)

[Protocol Download](#)

- ELISA

Gene Info — DNASE2B

Entrez GeneID [58511](#)

GeneBank Accession# [NM_021233](#)

Protein Accession# [NP_067056](#)

Gene Name DNASE2B

Gene Alias DLAD

Gene Description deoxyribonuclease II beta

Omim ID [608057](#)

Gene Ontology [Hyperlink](#)

Gene Summary The protein encoded by this gene shares considerable sequence similarity to, and is structurally related to DNase II. The latter is a well characterized endonuclease that catalyzes DNA hydrolysis in the absence of divalent cations at acidic pH. Unlike DNase II which is ubiquitously expressed, expression of this gene product is restricted to the salivary gland and lungs. The gene has been localized to chromosome 1p22.3 adjacent (and in opposite orientation) to the uricase pseudogene. Two transcript variants encoding different isoforms have been described for this gene. [provided by RefSeq]

Other Designations DNase II-like acid DNase|OTTHUMP00000011481|endonuclease DLAD|lysosomal DNase II

Publication Reference

- [Coordinated and sequential activation of neutral and acidic DNases during interdigital cell death in the embryonic limb.](#)

Montero JA, Lorda-Diez CI, Certal AC, Moreno N, Rodriguez-Leon J, Torriglia A, Hurlé JM.

Apoptosis 2010 Oct; 15(10):1197.

Application: IF, Chicken, Mesenchymal cells

Pathway

- [Lysosome](#)