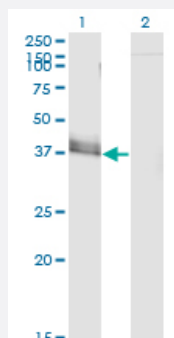


JAM2 monoclonal antibody (M02), clone 1C2

Catalog # H00058494-M02

Size 100 ug

Applications

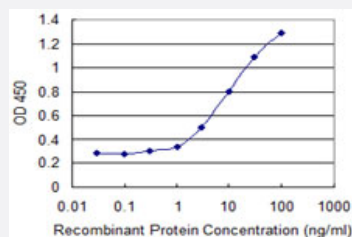


Western Blot (Transfected lysate)

Western Blot analysis of JAM2 expression in transfected 293T cell line by JAM2 monoclonal antibody (M02), clone 1C2.

Lane 1: JAM2 transfected lysate (33.2 KDa).

Lane 2: Non-transfected lysate.



Sandwich ELISA (Recombinant protein)

Detection limit for recombinant GST tagged JAM2 is 0.1 ng/ml as a capture antibody.



Western Blot detection against Immunogen (55.44 KDa) .

Specification

Product Description

Mouse monoclonal antibody raised against a full-length recombinant JAM2.

Immunogen	JAM2 (AAH17779, 29 a.a. ~ 298 a.a) full-length recombinant protein with GST tag. MW of the GST tag alone is 26 KDa.
Sequence	FSAPKDQQVVTAVEYQEAILACKTPKKTVSSRLEWKKLGRSVSFVYYQQLQGDFKNRAEMIDFN IRIKNVTRSDAGKYRCEVSAPSEQGQNL EEDTVTLEVLVAPAVPSCEVPSSALSGTVVELRCQDK EGNPAPEYTWFKDGIRLLENPRLGSQSTNSSYTMNTKTGTLQFNTVSKLDTGEYSCEARN SVGYR RCPGKRMQVDDLNISGIIAAVVVVVALVISVCGLGVCYAQRKG YFSKETS FQKSNSSSKATTMSEN DFKHTKSFII
Host	Mouse
Reactivity	Human
Interspecies Antigen Sequence	Mouse (79); Rat (80)
Isotype	IgG1 Kappa
Quality Control Testing	Antibody Reactive Against Recombinant Protein. Western Blot detection against Immunogen (55.44 KDa) .
Storage Buffer	In 1x PBS, pH 7.4
Storage Instruction	Store at -20°C or lower. Aliquot to avoid repeated freezing and thawing.

Applications

- Western Blot (Transfected lysate)

Western Blot analysis of JAM2 expression in transfected 293T cell line by JAM2 monoclonal antibody (M02), clone 1C2.

Lane 1: JAM2 transfected lysate(33.2 KDa).

Lane 2: Non-transfected lysate.

[Protocol Download](#)

- Western Blot (Recombinant protein)

[Protocol Download](#)

- Sandwich ELISA (Recombinant protein)

Detection limit for recombinant GST tagged JAM2 is 0.1 ng/ml as a capture antibody.

[Protocol Download](#)

- ELISA

Gene Info — JAM2

Entrez GeneID [58494](#)

GeneBank Accession# [BC017779](#)

Protein Accession# [AAH17779](#)

Gene Name JAM2

Gene Alias C21orf43, CD322, JAM-B, JAMB, PRO245, VE-JAM, VEJAM

Gene Description junctional adhesion molecule 2

Omim ID [606870](#)

Gene Ontology [Hyperlink](#)

Gene Summary Tight junctions represent one mode of cell-to-cell adhesion in epithelial or endothelial cell sheets, forming continuous seals around cells and serving as a physical barrier to prevent solutes and water from passing freely through the paracellular space. The protein encoded by this immunoglobulin superfamily gene member is localized in the tight junctions between high endothelial cells. It acts as an adhesive ligand for interacting with a variety of immune cell types and may play a role in lymphocyte homing to secondary lymphoid organs. [provided by RefSeq]

Other Designations JAM-IT/VE-JAM|OTTHUMP00000096100|junctional adhesion molecule B|vascular endothelial junction-associated molecule

Pathway

- [Cell adhesion molecules \(CAMs\)](#)
- [Epithelial cell signaling in Helicobacter pylori infection](#)
- [Leukocyte transendothelial migration](#)
- [Tight junction](#)