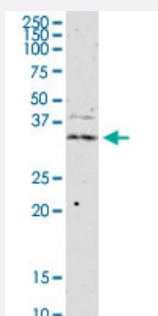


JAM2 monoclonal antibody (M01), clone 1G4

Catalog # H00058494-M01

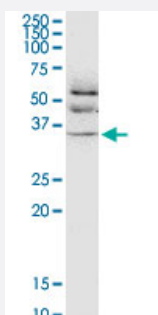
Size 100 ug

Applications



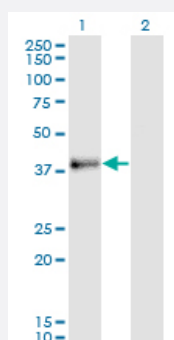
Western Blot (Tissue lysate)

JAM2 monoclonal antibody (M01), clone 1G4. Western Blot analysis of JAM2 expression in human ovarian cancer.



Western Blot (Cell lysate)

JAM2 monoclonal antibody (M01), clone 1G4. Western Blot analysis of JAM2 expression in HL-60.

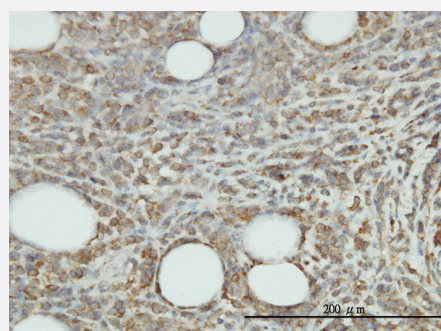


Western Blot (Transfected lysate)

Western Blot analysis of JAM2 expression in transfected 293T cell line by JAM2 monoclonal antibody (M01), clone 1G4.

Lane 1: JAM2 transfected lysate (Predicted MW: 33.2 KDa).

Lane 2: Non-transfected lysate.

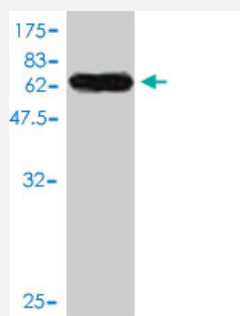
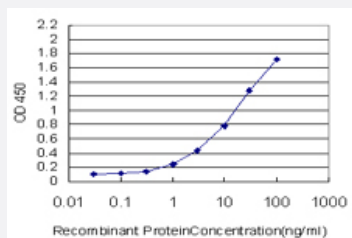


Immunohistochemistry (Formalin/PFA-fixed paraffin-embedded sections)

Immunoperoxidase of monoclonal antibody to JAM2 on formalin-fixed paraffin-embedded human malignant lymphoma, diffuse large B tissue. [antibody concentration 1 ug/ml]

Sandwich ELISA (Recombinant protein)

Detection limit for recombinant GST tagged JAM2 is approximately 0.1ng/ml as a capture antibody.



Western Blot detection against Immunogen (55.44 KDa) .

Specification

Product Description	Mouse monoclonal antibody raised against a full length recombinant JAM2.
Immunogen	JAM2 (AAH17779, 29 a.a. ~ 298 a.a) full-length recombinant protein with GST tag. MW of the GST tag alone is 26 KDa.
Sequence	FSAPKDQQVVTAVEYQEAILACKTPKKTVSSRLEWKKLGRSVSFVYYQQLQGDFKNRAEMIDFN IRIKNVTRSDAGKYRCEVSAPSEQQNLEEDVTLEVLVAPAVPSCEVPSSALSGTVVELRCQDK EGNPAPEYTWFKDGIRLLENPRLGSQSTNSSYTMNTKTGTLQFNTVSKLDTGEYSCEARNVGYR RCPGKRMQVDDLNISGIAAVVVVALVISVCGLGVCYAQRKGYSKETSFQKSNSSSKATTMTSEN DFKHTKSFI
Host	Mouse
Reactivity	Human
Interspecies Antigen Sequence	Mouse (79); Rat (80)
Isotype	IgG1 kappa
Quality Control Testing	Antibody Reactive Against Recombinant Protein. Western Blot detection against Immunogen (55.44 KDa) .
Storage Buffer	In 1x PBS, pH 7.4
Storage Instruction	Store at -20°C or lower. Aliquot to avoid repeated freezing and thawing.

Applications

- Western Blot (Tissue lysate)

JAM2 monoclonal antibody (M01), clone 1G4. Western Blot analysis of JAM2 expression in human ovarian cancer.

[Protocol Download](#)

- Western Blot (Cell lysate)

JAM2 monoclonal antibody (M01), clone 1G4. Western Blot analysis of JAM2 expression in HL-60.

[Protocol Download](#)

- Western Blot (Transfected lysate)

Western Blot analysis of JAM2 expression in transfected 293T cell line by JAM2 monoclonal antibody (M01), clone 1G4.

Lane 1: JAM2 transfected lysate (Predicted MW: 33.2 KDa).

Lane 2: Non-transfected lysate.

[Protocol Download](#)

- Western Blot (Recombinant protein)

[Protocol Download](#)

- Immunohistochemistry (Formalin/PFA-fixed paraffin-embedded sections)

Immunoperoxidase of monoclonal antibody to JAM2 on formalin-fixed paraffin-embedded human malignant lymphoma, diffuse large B tissue. [antibody concentration 1 ug/ml]

[Protocol Download](#)

- Sandwich ELISA (Recombinant protein)

Detection limit for recombinant GST tagged JAM2 is approximately 0.1ng/ml as a capture antibody.

[Protocol Download](#)

- ELISA

Gene Info — JAM2

Entrez GeneID [58494](#)

GeneBank Accession# [BC017779](#)

Protein Accession#	AAH17779
Gene Name	JAM2
Gene Alias	C21orf43, CD322, JAM-B, JAMB, PRO245, VE-JAM, VEJAM
Gene Description	junctional adhesion molecule 2
Omim ID	606870
Gene Ontology	Hyperlink
Gene Summary	Tight junctions represent one mode of cell-to-cell adhesion in epithelial or endothelial cell sheets, forming continuous seals around cells and serving as a physical barrier to prevent solutes and water from passing freely through the paracellular space. The protein encoded by this immunoglobulin superfamily gene member is localized in the tight junctions between high endothelial cells. It acts as an adhesive ligand for interacting with a variety of immune cell types and may play a role in lymphocyte homing to secondary lymphoid organs. [provided by RefSeq]
Other Designations	JAM-IT/VE-JAM OTTHUMP00000096100 junctional adhesion molecule B vascular endothelial junction-associated molecule

Pathway

- [Cell adhesion molecules \(CAMs\)](#)
- [Epithelial cell signaling in Helicobacter pylori infection](#)
- [Leukocyte transendothelial migration](#)
- [Tight junction](#)